

Архангельск (8182)63-90-72
Астана (7172)727-132
Астрахань (8512)99-46-04
Барнаул (3852)73-04-60
Белгород (4722)40-23-64
Брянск (4832)59-03-52
Владивосток (423)249-28-31
Волгоград (844)278-03-48
Вологда (8172)26-41-59
Воронеж (473)204-51-73
Екатеринбург (343)384-55-89

Иваново (4932)77-34-06
Ижевск (3412)26-03-58
Казань (843)206-01-48
Калининград (4012)72-03-81
Калуга (4842)92-23-67
Кемерово (3842)65-04-62
Киров (8332)68-02-04
Краснодар (861)203-40-90
Красноярск (391)204-63-61
Курск (4712)77-13-04
Липецк (4742)52-20-81

Магнитогорск (3519)55-03-13
Москва (495)268-04-70
Мурманск (8152)59-64-93
Набережные Челны (8552)20-53-41
Нижний Новгород (831)429-08-12
Новокузнецк (3843)20-46-81
Новосибирск (383)227-86-73
Омск (3812)21-46-40
Орел (4862)44-53-42
Оренбург (3532)37-68-04
Пенза (8412)22-31-16

Пермь (342)205-81-47
Ростов-на-Дону (863)308-18-15
Рязань (4912)46-61-64
Самара (846)206-03-16
Санкт-Петербург (812)309-46-40
Саратов (845)249-38-78
Севастополь (8692)22-31-93
Симферополь (3652)67-13-56
Смоленск (4812)29-41-54
Сочи (862)225-72-31
Ставрополь (8652)20-65-13

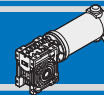
Сургут (3462)77-98-35
Тверь (4822)63-31-35
Томск (3822)98-41-53
Тула (4872)74-02-29
Тюмень (3452)66-21-18
Ульяновск (8422)24-23-59
Уфа (347)229-48-12
Хабаровск (4212)92-98-04
Челябинск (351)202-03-61
Череповец (8202)49-02-64
Ярославль (4852)69-52-93

www.inctecno.nt-rt.ru || ion@nt-rt.ru

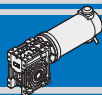
DC микро-мотор-редукторы INTECNO

MICRO Motoriduttori C.C. a Vite senza Fine
D.C. MICRO Wormgearmotors





| Indice | Index | Pag. Page |
|--------------------------|----------------------------|--------------|
| Caratteristiche tecniche | <i>Technical features</i> | C2 |
| Designazione | <i>Classification</i> | C2 |
| Simbologia | <i>Symbols</i> | C2 |
| Lubrificazione | <i>Lubrication</i> | C2 |
| Carichi radiali | <i>Radial loads</i> | C3 |
| Dati di dentatura | <i>Toothing data</i> | C3 |
| Rendimento | <i>Efficiency</i> | C3 |
| CM026 con motore C.C. | <i>CM026 with DC motor</i> | C4 |
| CM030 con motore C.C. | <i>CM030 with DC motor</i> | C8 |
| Dimensioni | <i>Dimensions</i> | C10 |
| Opzioni | <i>Options</i> | C10 |
| Accessori | <i>Accessories</i> | C11 |



Caratteristiche tecniche

Technical features

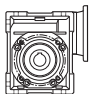
Le caratteristiche principali dei motoriduttori a corrente continua della serie CM sono:

The main features of CM D.C. gearmotor range are:

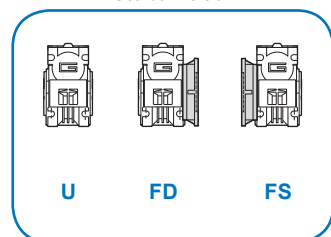
- Alimentazione in bassa tensione 12/24 Vcc
 - Possibilità di montaggio encoder
 - Potenze motore disponibili da 55 a 250W S2
 - Magneti in ferrite
 - Carcasce dei riduttori in pressofusione di alluminio
 - Lubrificazione permanente con olio sintetico.
- Low voltage power supply 12/24 Vdc
 - Suitable for encoder assembly
 - Motor power ratings available from 55 to 250W S2
 - Ferrite magnets
 - Die-cast aluminum housing
 - Permanent synthetic oil long-life lubrication.

Designazione

Classification

| RIDUTTORE / GEARBOX | | | | MOTORE / MOTOR | | |
|--|--------------------------|------------------------------------|----------------------|--|--------------------------|--------------------|
| CM | 026 | 20 | U | EC035 | 24V | — |
| Tipo Type | Grandezza Size | Rapporto in Ratio in | Versione Version | Tipo Type | Tensione Voltage | Opzioni Options |
| CM  | 026 030 | Vedere tabelle See tables | U F | EC035 EC050 EC070 EC100 EC180 | 12V 24V | Encoder |

Versione Riduttore
Gearbox Version



Simbologia

Symbols

| | | | | |
|----------------|---|----------------|-------|---|
| Ns | n° stadi / No. stages | Pn | [W] | Potenza nominale / Nominal power |
| in | rapporto nominale / nominal ratio | V | [V] | Tensione / Voltage |
| ir | rapporto reale / real ratio | I | [A] | Assorbimento / Current |
| M ₂ | [Nm] coppia in uscita in funzionamento continuativo S1 output torque for continuous operation S1 | IC | | Classe di isolamento termico / Thermal insulation class |
| Rd | rendimento dinamico / efficiency | FF | | Fattore di forma / Form factor |
| R ₂ | [N] massimo carico radiale al centro dell'albero uscita max. radial load at output shaft centre | Mn | [Nm] | Coppia / Torque |
| A ₂ | [N] massimo carico assiale / max. axial load | n ₁ | [Rpm] | Giri / Speed |
| | | IP | | Grado di protezione / Enclosure protection |
| | | Kg | | Peso / Weight |

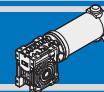
Lubrificazione

Lubrication

I riduttori a vite senza fine della serie CM026 e CM030 sono lubrificati a vita con olio sintetico di viscosità 320 e possono essere installati in qualunque posizione di montaggio.
Temperatura ambiente 0 ÷ 40 °C (in assenza di congelamento ed in assenza di condensa).
Per temperature diverse, contattare nostro UT.

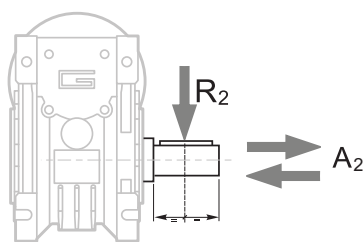
Permanent synthetic oil long-life lubrication allow to use CM026 and CM030 wormgearbox range in all mounting position.
Ambient temperature 0 ÷ 40 °C (in the absence of freezing and condensation).
For temperature outside this range please contact our technical dept.

| Quantità di olio (litri) / Oil quantity (litres) | | | | | | |
|--|-------|----|----|----|----|----|
| | B3 | B8 | B6 | B7 | V5 | V6 |
| CM026 | 0.015 | | | | | |
| CM030 | 0.03 | | | | | |



Carichi radiali

Radial loads

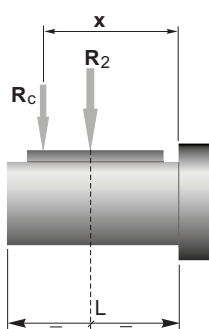


$A_2 = R_2 \times 0.2$

| n_2 [min ⁻¹] | R_2 [N] | |
|-------------------------------|-----------|-------|
| | CM026 | CM030 |
| 187 | 400 | 674 |
| 140 | 490 | 743 |
| 93 | 580 | 851 |
| 70 | 610 | 936 |
| 56 | 610 | 1008 |
| 47 | 610 | 1069 |
| 35 | 610 | 1179 |
| 28 | 610 | 1270 |
| 23 | 610 | 1356 |
| 18 | 610 | 1471 |
| 14 | 610 | 1600 |

Quando il carico radiale risultante non è applicato sulla mezza-
ria dell'albero occorre calcolare quello effettivo con la seguente
formula:

When the resulting radial load is not applied on the centre line
of the shaft it is necessary to calculate the effective load with the
following formula:



$$R_c = \frac{R_2 \cdot a}{(b+x)} \leq R_{2MAX}$$

$$R \leq R_c$$

a, b = valori riportati nella tabella
a, b = values given in the table

| | CM | |
|------------|-----|------|
| | 026 | 030 |
| a | 56 | 65 |
| b | 43 | 50 |
| R_{2MAX} | 610 | 1600 |

Dati di dentatura

Toothing data

| | Dati della coppia vite-corona Worm wheel data | Rapporto / Ratio | | | | | | | | | | | |
|-------|--|------------------|---------|---------|---------|---------|--------|--------|--------|--------|--------|--------|--------|
| | | 5 | 7.5 | 10 | 15 | 20 | 25 | 30 | 40 | 50 | 60 | 80 | 100 |
| CM026 | Z | 6 | 4 | 3 | 2 | 2 | | 1 | 1 | 1 | 1 | | |
| | β | 34° 35' | 24° 41' | 19° 1' | 12° 57' | 10° 30' | | 6° 33' | 5° 17' | 4° 26' | 3° 49' | | |
| CM030 | Z | 6 | 4 | 3 | 2 | 2 | 2 | 1 | 1 | 1 | 1 | 1 | 1 |
| | β | 27° 4' | 24° 28' | 18° 50' | 12° 49' | 10° 23' | 8° 43' | 6° 29' | 5° 14' | 4° 23' | 3° 46' | 2° 57' | 2° 25' |

Rendimento

Efficiency

| | n_1 [min ⁻¹] | Rendimento Efficienc | Rapporto / Ratio | | | | | | | | | | | |
|-------|-------------------------------|-------------------------|------------------|------|------|------|------|------|------|------|------|------|------|------|
| | | | 5 | 7.5 | 10 | 15 | 20 | 25 | 30 | 40 | 50 | 60 | 80 | 100 |
| CM026 | 2800 | Rd | 0.89 | 0.87 | 0.85 | 0.83 | 0.80 | | 0.73 | 0.68 | 0.64 | 0.60 | | |
| | | Rs | 0.72 | 0.71 | 0.68 | 0.61 | 0.56 | | 0.46 | 0.41 | 0.36 | 0.34 | | |
| CM030 | 2800 | Rd | 0.89 | 0.88 | 0.86 | 0.84 | 0.81 | 0.78 | 0.74 | 0.70 | 0.65 | 0.62 | 0.57 | 0.52 |
| | | Rs | 0.72 | 0.67 | 0.63 | 0.55 | 0.50 | 0.43 | 0.39 | 0.35 | 0.31 | 0.27 | 0.23 | 0.21 |

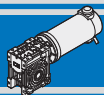
Reversibilità e irreversibilità

Reversibility and irreversibility

La tabella sottostante riporta a titolo puramente
indicativo i vari gradi di reversibilità/irreversibilità
nei riduttori a vite senza fine in funzione del rendi-
mento dinamico Rd e statico Rs.

The table below is provided for reference purposes
only. It contains the various degrees of reversibi-
lity/irreversibility of wormgearboxes in relation to
dynamic Rd and static Rs efficiency.

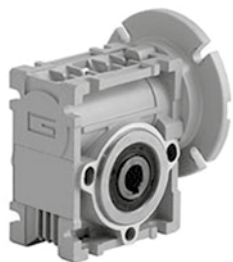
| Rd | Reversibilità e irreversibilità dinamica | Dynamic reversibility and irreversibility |
|-------------|--|---|
| > 0.60 | Reversibilità dinamica | Dynamic reversibility |
| 0.50 - 0.60 | Reversibilità dinamica incerta | Uncertain dynamic reversibility |
| 0.40 - 0.50 | Buona irreversibilità dinamica | Good dynamic irreversibility |
| <0.40 | Irreversibilità dinamica | Dynamic irreversibility |
| Rs | Reversibilità e irreversibilità statica | Static reversibility and irreversibility |
| > 0.55 | Reversibilità statica | Static reversibility |
| 0.50 - 0.55 | Reversibilità statica incerta | Uncertain static reversibility |
| <0.50 | Irreversibilità statica | Static irreversibility |



MICRO MOTORIDUTTORI C.C. A VITE SENZA FINE D.C. MICRO WORMGEARMOTORS

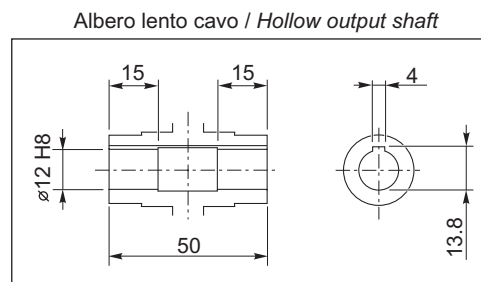
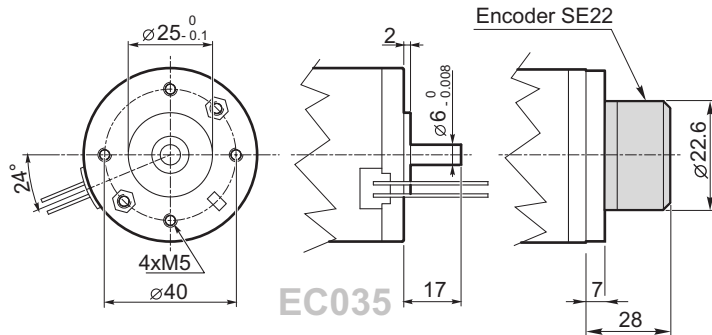
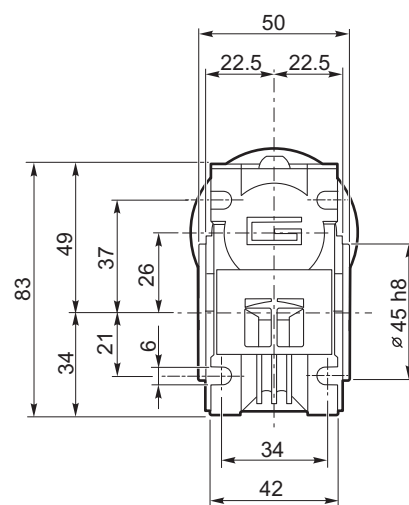
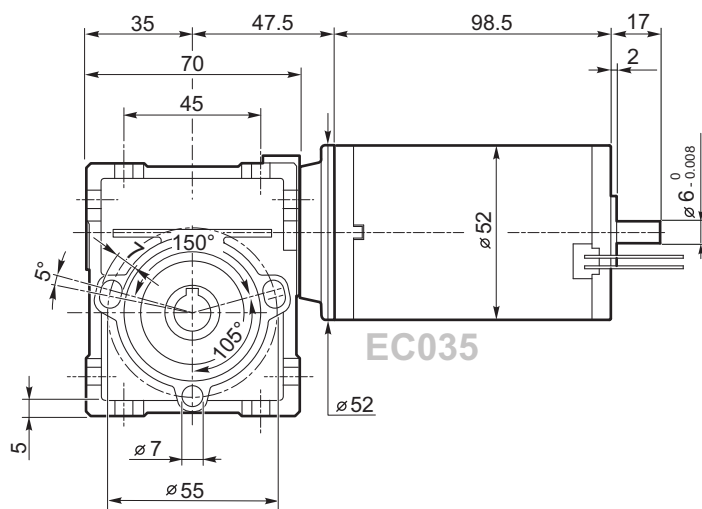
CM026 con motore C.C.

CM026 with DC motor

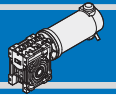


| CM026 n ₁ =3000 rpm | | | EC035 S2 12/24V | |
|-----------------------------------|------------------------|-----|--------------------|-------|
| ir | M ₂ [Nm] | Kg | [Nm] | [rpm] |
| 5 | 10 | 0.8 | 0.8 | 600 |
| 7.5 | 11 | | 1.2 | 400 |
| 10 | 11 | | 1.5 | 300 |
| 15 | 11 | | 2.2 | 200 |
| 20 | 11 | | 2.9 | 150 |
| 30 | 12 | | 3.9 | 100 |
| 40 | 11 | | 4.9 | 75 |
| 50 | 10 | | 5.8 | 60 |
| 60 | 9 | | 6.5 | 50 |

| Tipo Type | Servizio Duty | P _n [W] | V [V] | I [A] | IC | FF | M _n [Nm] | n ₁ [rpm] | IP | Kg |
|--------------|------------------|--------------------|-------|-------|----|----|---------------------|----------------------|----|-----|
| EC035.120 | S2 9' | 55 | 12 | 8.0 | F | 1 | 0.18 | 3000 | 44 | 0.8 |
| EC035.240 | S2 9' | 55 | 24 | 4.0 | | | 0.18 | 3000 | | |

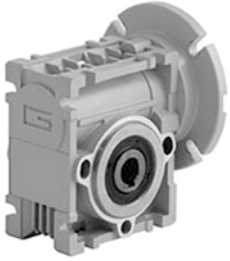


EC035: per montaggio encoder
serve flangia AS204
EC035: encoder assembling
needs flange AS204



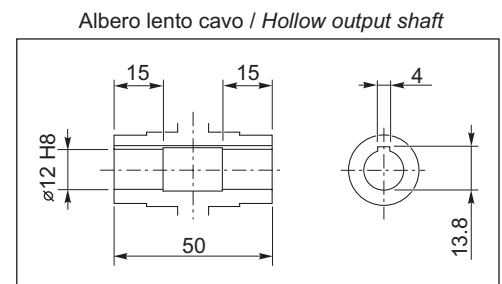
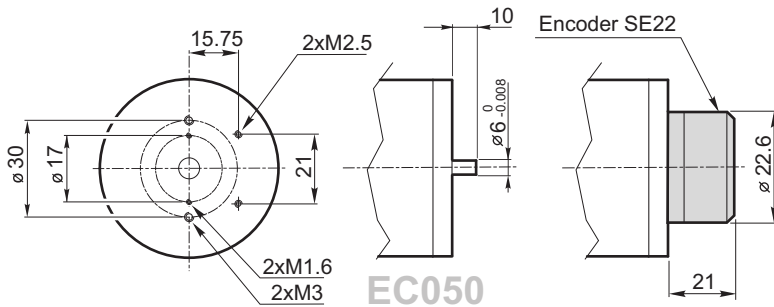
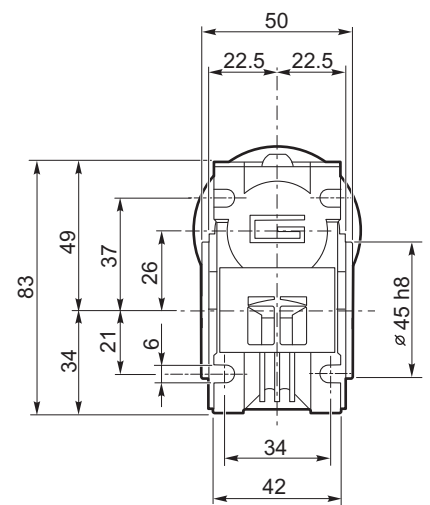
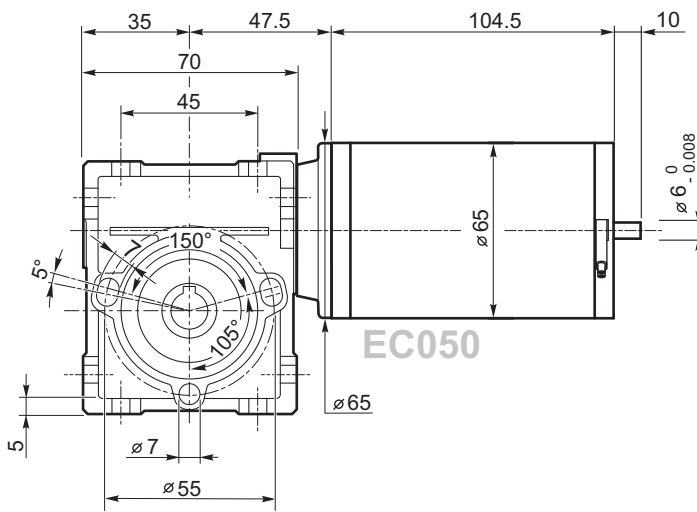
CM026 con motore C.C.

CM026 with DC motor



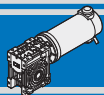
| CM026 n ₁ =3000 rpm | | | EC050 S2 12/24V | |
|-----------------------------------|------------------------|-----|--------------------|-------|
| ir | M ₂ [Nm] | Kg | [Nm] | [rpm] |
| 5 | 10 | 0.8 | 1 | 600 |
| 7.5 | 11 | | 1.5 | 400 |
| 10 | 11 | | 2 | 300 |
| 15 | 11 | | 2.8 | 200 |
| 20 | 11 | | 3.6 | 150 |
| 30 | 12 | | 4.8 | 100 |
| 40 | 11 | | 6 | 75 |
| 50 | 10 | | 7 | 60 |
| 60 | 9 | | 8 | 50 |

| Tipo Type | Servizio Duty | P _n [W] | V [V] | I [A] | IC | FF | M _n [Nm] | n ₁ [rpm] | IP | Kg |
|--------------|------------------|--------------------|-------|-------|----|----|---------------------|----------------------|----|-----|
| EC050.12E | S2 9' | 70 | 12 | 9.4 | F | 1 | 0.22 | 3000 | 44 | 1.2 |
| EC050.24E | S2 9' | 70 | 24 | 4.7 | | | 0.22 | | | |



DC

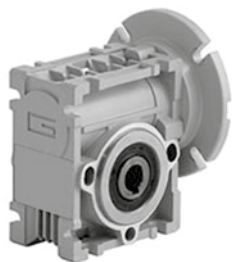
CM



MICRO MOTORIDUTTORI C.C. A VITE SENZA FINE D.C. MICRO WORMGEARMOTORS

CM026 con motore C.C.

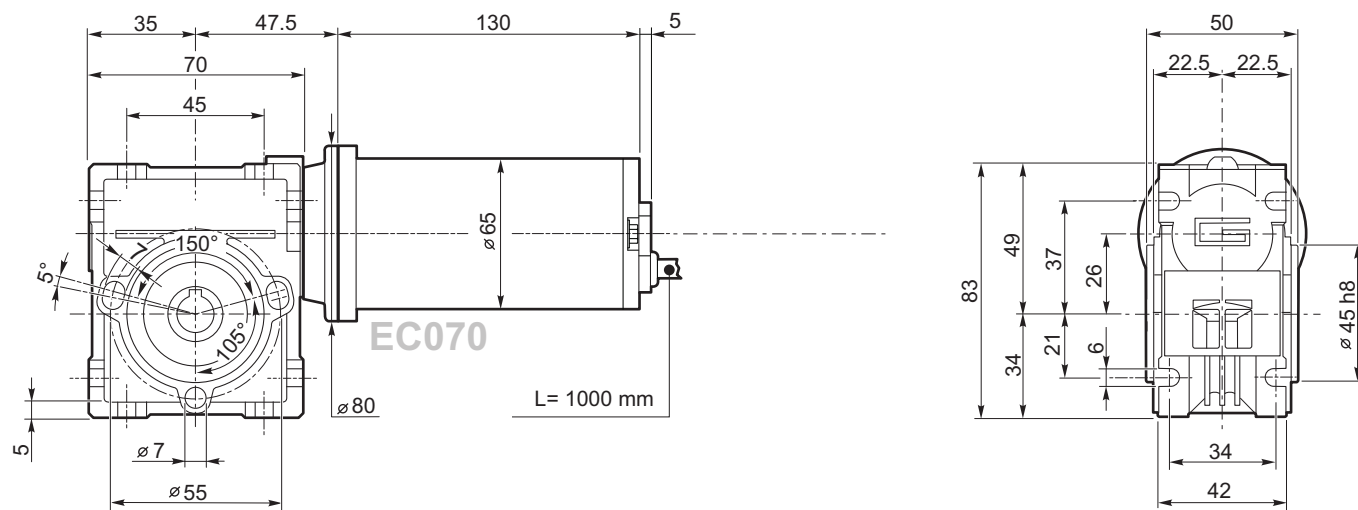
CM026 with DC motor



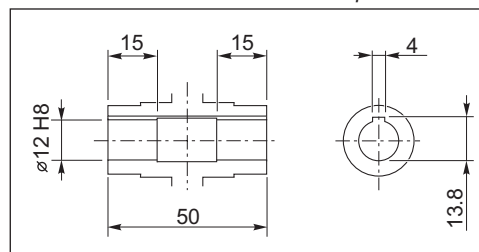
| CM026 $n_1=3000$ rpm | | | EC070 | |
|-------------------------|---------------|-----|----------------------|-----------------------|
| ir | M_2 [Nm] | Kg | S2 12/24 V [Nm] | S2 12/24 V [rpm] |
| 5 | 10 | 0.8 | 1.38 | 600 |
| 7.5 | 11 | | 2.03 | 400 |
| 10 | 11 | | 2.63 | 300 |
| 15 | 11 | | 3.86 | 200 |
| 20 | 11 | | 4.96 | 150 |
| 30 | 12 | | 6.79 | 100 |
| 40 | 11 | | 8.43 | 75 |
| 50 | 10 | | 9.92 | 60 |
| 60 | 9 | | 11.16 | 50 |

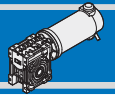
Nota: le caselle in colore grigio indicano il superamento della coppia massima sopportata dal riduttore per il servizio in S1.
N.B.: boxes in grey indicate that maximum torque withstood by gear reducer for service in S1 is exceeded.

| Tipo Type | Servizio Duty | P_n [W] | V [V] | I [A] | IC | FF | M_n [Nm] | n_1 [rpm] | IP | Kg |
|--------------|------------------|-------------|---------|---------|----|----|--------------|---------------|----|-----|
| EC070.120 | S2 20' | 100 | 12 | 11.8 | F | 1 | 0.31 | 3000 | 44 | 1.7 |
| EC070.240 | S2 20' | 100 | 24 | 5.9 | | | 0.22 | | | |



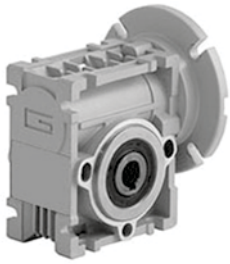
Albero lento cavo / Hollow output shaft





CM026 con motore C.C.

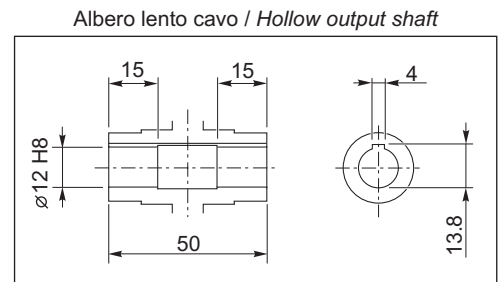
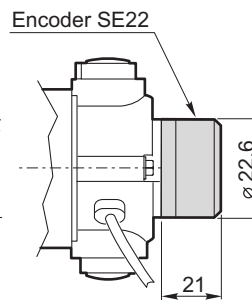
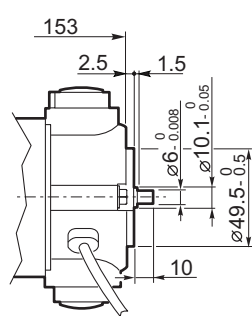
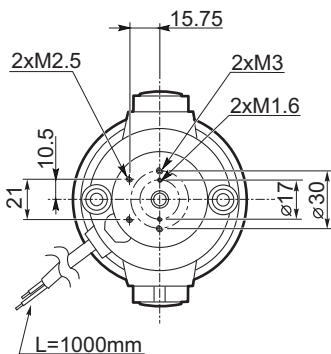
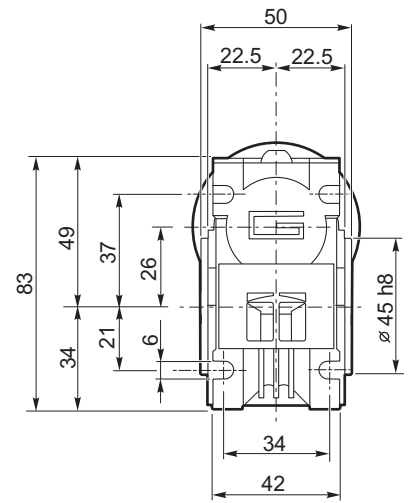
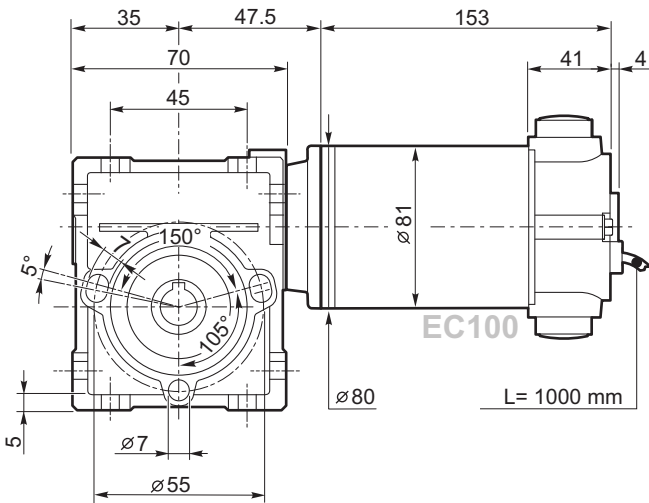
CM026 with DC motor



| CM026 | | | EC100 | | | |
|--------------------------|---------------------|-----|------------|------------|------------|------------|
| n ₁ =2800 rpm | | | S1 12/24 V | S1 12/24 V | S2 12/24 V | S2 12/24 V |
| ir | M ₂ [Nm] | Kg | [Nm] | [rpm] | [Nm] | [rpm] |
| 5 | 10 | 0.8 | 1.38 | 600 | 1.92 | 600 |
| 7.5 | 11 | | 2.03 | 400 | 2.81 | 400 |
| 10 | 11 | | 2.63 | 300 | 3.65 | 300 |
| 15 | 11 | | 3.86 | 200 | 5.36 | 200 |
| 20 | 11 | | 4.96 | 150 | 6.88 | 150 |
| 30 | 12 | | 6.79 | 100 | 9.42 | 100 |
| 40 | 11 | | 8.43 | 75 | 11.69 | 75 |
| 50 | 10 | | 9.92 | 60 | 13.76 | 60 |
| 60 | 9 | | 11.16 | 50 | 15.48 | 50 |

Nota: le caselle in colore grigio indicano il superamento della coppia massima sopportata dal riduttore per il servizio in S1.
 N.B.: boxes in grey indicate that maximum torque withstood by gear reducer for service in S1 is exceeded.

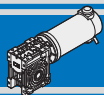
| Tipo Type | Servizio Duty | P _n [W] | V [V] | I [A] | IC | FF | M _n [Nm] | n ₁ [rpm ¹] | IP | Kg |
|-----------|---------------|----------------------|---------|---------|----|----|-----------------------|-------------------------------------|----|-----|
| EC100.120 | S1 | 100 | 12 | 12 | F | 1 | 0.31 | 3000 | 44 | 2.7 |
| | S2 25' | 140 | | 16.8 | | | 0.43 | | | |
| EC100.240 | S1 | 100 | 24 | 6 | | | 0.31 | | | |
| | S2 25' | 140 | | 8.4 | | | 0.43 | | | |



EC100.24E

DC

CM



MICRO MOTORIDUTTORI C.C. A VITE SENZA FINE D.C. MICRO WORMGEARMOTORS

CM030 con motore C.C.

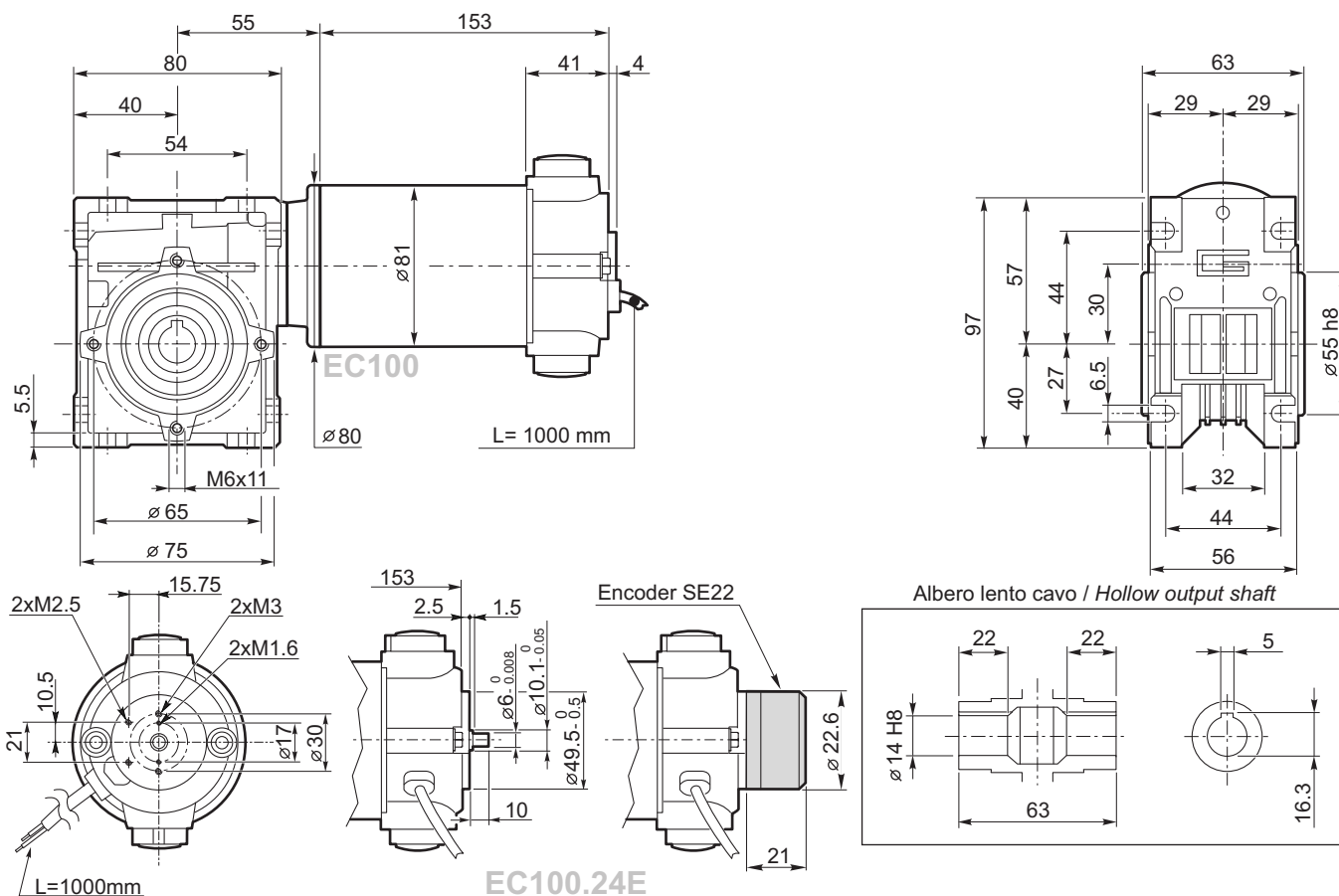
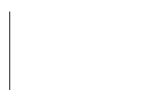
CM030 with DC motor

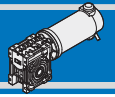


| CM030 n ₁ =3000 rpm | | | EC100 | | | |
|-----------------------------------|------------------------|------|------------|---------|------------|---------|
| ir | M ₂ [Nm] | Kg | S1 12/24 V | | S2 12/24 V | |
| | | | [Nm] | [rpm] | [Nm] | [rpm] |
| 5 | 13 | 1.2 | 1.4 | 600 | 1.9 | 600 |
| 7.5 | 15 | | 2 | 400 | 2.8 | 400 |
| 10 | 16 | | 2.7 | 300 | 3.7 | 300 |
| 15 | 16 | | 3.9 | 200 | 5.4 | 200 |
| 20 | 14 | | 5 | 150 | 6.9 | 150 |
| 25 | 15 | | 6 | 120 | 8.3 | 120 |
| 30 | 18 | | 6.9 | 100 | 9.6 | 100 |
| 40 | 16 | | 8.7 | 75 | 12.1 | 75 |
| 50 | 15 | | 10 | 60 | 13.9 | 60 |
| 60 | 14 | | 11.5 | 50 | 16.0 | 50 |
| 80 | 12 | 14.1 | 37.5 | 19.6 | 37.5 | |
| 100 | 11 | 16.1 | 30 | 22.3 | 30 | |

Nota: le caselle in colore grigio indicano il superamento della coppia massima sopportata dal riduttore per il servizio in S1.
N.B.: boxes in grey indicate that maximum torque withstood by gear reducer for service in S1 is exceeded.

| Tipo Type | Servizio Duty | P _n [W] | V [V] | I [A] | IC | FF | M _n [Nm] | n ₁ [rpm ¹] | IP | Kg |
|-----------|---------------|----------------------|---------|---------|----|----|-----------------------|-------------------------------------|----|-----|
| EC100.120 | S1 | 100 | 12 | 12 | F | 1 | 0.31 | 3000 | 44 | 2.7 |
| | S2 25' | 140 | | 16.8 | | | 0.43 | | | |
| EC100.240 | S1 | 100 | 24 | 6 | | | 0.31 | | | |
| EC100.24E | S2 25' | 140 | | 8.4 | | | 0.43 | | | |





CM030 con motore C.C.

CM030 with DC motor

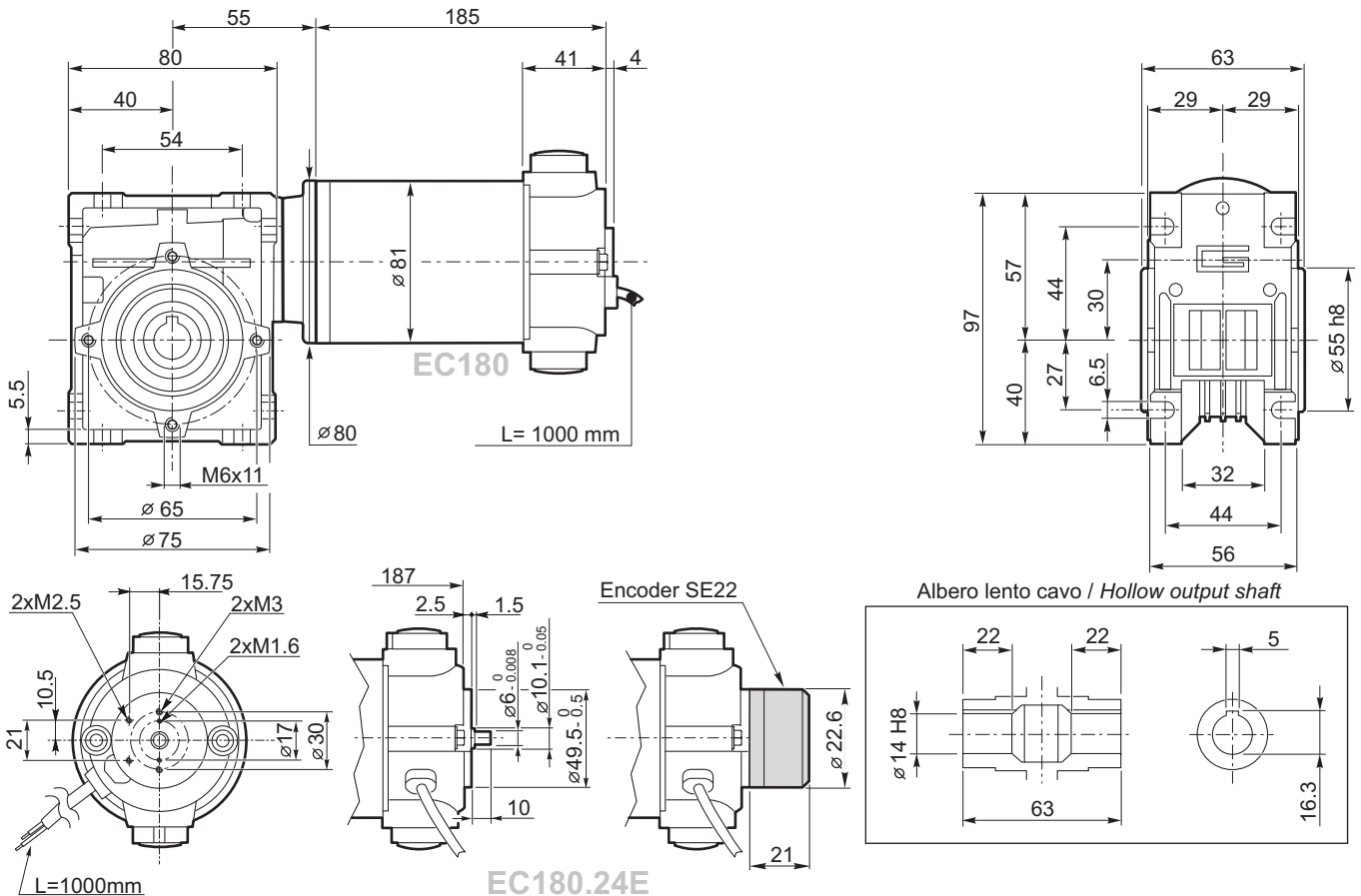


| CM030 n ₁ =3000 rpm | | | EC180 | | | |
|-----------------------------------|------------------------|-----|------------|---------|------------|---------|
| ir | M ₂ [Nm] | Kg | S1 12/24 V | | S2 12/24 V | |
| | | | [Nm] | [rpm] | [Nm] | [rpm] |
| 5 | 13 | 1.2 | 2.6 | 600 | 3.6 | 600 |
| 7.5 | 15 | | 3.7 | 400 | 5.2 | 400 |
| 10 | 16 | | 5.0 | 300 | 7.0 | 300 |
| 15 | 16 | | 7.2 | 200 | 10.1 | 200 |
| 20 | 14 | | 9.2 | 150 | 12.9 | 150 |
| 25 | 15 | | 11.0 | 120 | 15.5 | 120 |
| 30 | 18 | | 12.7 | 100 | 17.8 | 100 |
| 40 | 16 | | 16.0 | 75 | 22.5 | 75 |
| 50 | 15 | | 18.4 | 60 | 25.8 | 60 |
| 60 | 14 | | 21.1 | 50 | 29.7 | 50 |
| 80 | 12 | | 25.9 | 37.5 | 36.4 | 37.5 |
| 100 | 11 | | 29.6 | 30 | 41.5 | 30 |

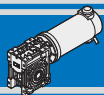
Nota: le caselle in colore grigio indicano il superamento della coppia massima sopportata dal riduttore per il servizio in S1.
N.B.: boxes in grey indicate that maximum torque withstood by gear reducer for service in S1 is exceeded.

Nota: su rapporti 60, 80 e 100 non è possibile montare motore EC180.24E
Note: on ratio 60, 80 and 100 is not possible to assembly motor EC180.24E

| Tipo Type | Servizio Duty | Pn [W] | V [V] | I [A] | IC | FF | Mn [Nm] | n1 [rpm ¹] | IP | Kg |
|-----------|---------------|----------|---------|---------|----|----|-----------|-------------------------|----|-----|
| EC180.120 | S1 | 180 | 12 | 21.5 | F | 1 | 0.57 | 3000 | 44 | 3.4 |
| | S2 25' | 250 | | 30 | | | 0.8 | | | |
| EC180.240 | S1 | 180 | 24 | 10.8 | | | 0.57 | | | |
| EC180.24E | S2 25' | 250 | | 15 | | | 0.8 | | | |



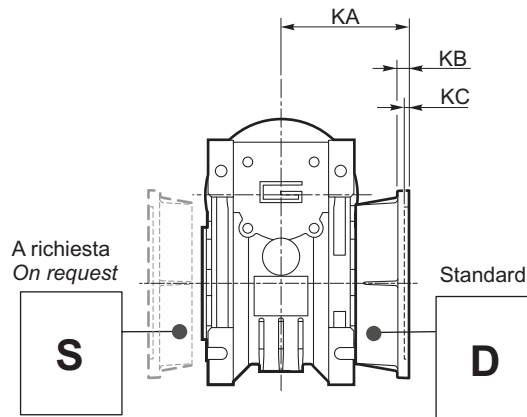
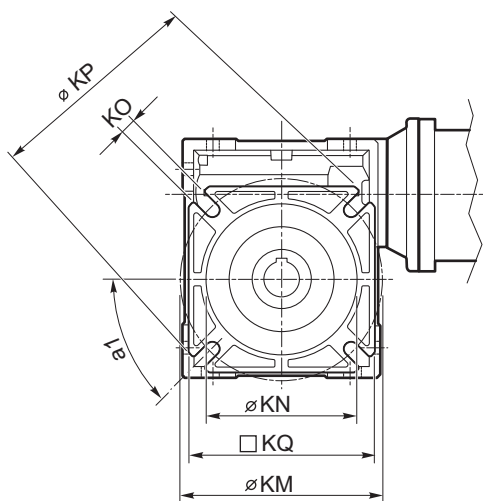
DC
CM



Dimensioni

Dimensions

CM.../... F... Flange uscita / Output flanges



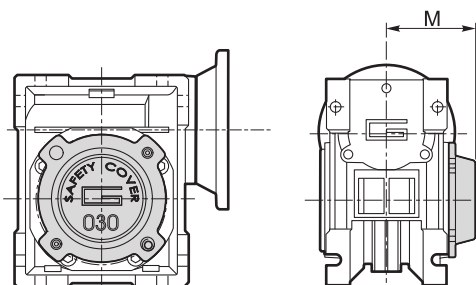
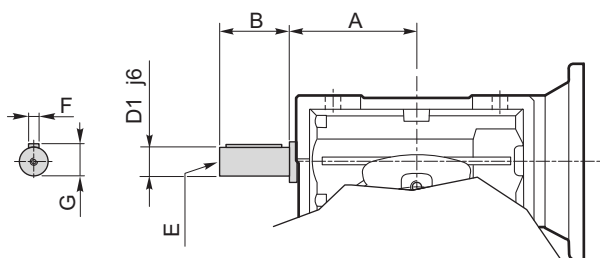
| CM | CM..F | | | | | | | | |
|-----|-------|------|----|-----|-------|----------|----------|----|----|
| | a1 | KA | KB | KC | KM | KN H8 | KO | KP | KQ |
| 026 | 45° | 45 | 6 | 4.5 | 55-69 | 40 | 6.5(n.4) | 75 | 70 |
| 030 | 45° | 54.5 | 6 | 4 | 68 | 50 | 6.5(n.4) | 80 | 70 |

Opzioni

Options

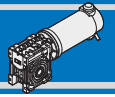
VS - Vite sporgente / Extended input shaft

SC - Safety cover



| | A | B | D ₁ j6 | E | F | G |
|--------|----|----|----------------------|----|---|------|
| CM 030 | 45 | 20 | 9 | M4 | 3 | 10.2 |

| | M |
|--------|----|
| CM 030 | 47 |

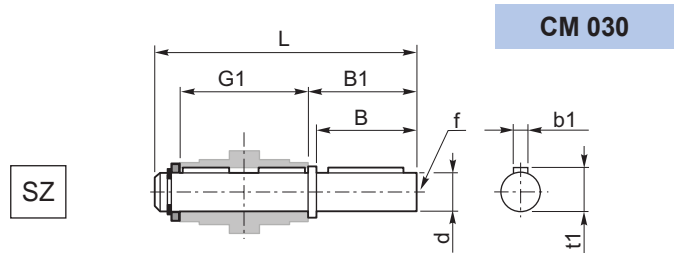
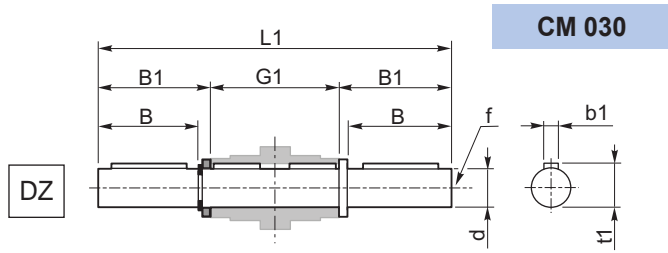


Accessori

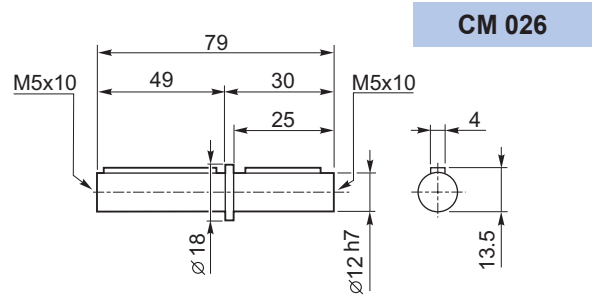
Accessories

Albero lento

Output shaft



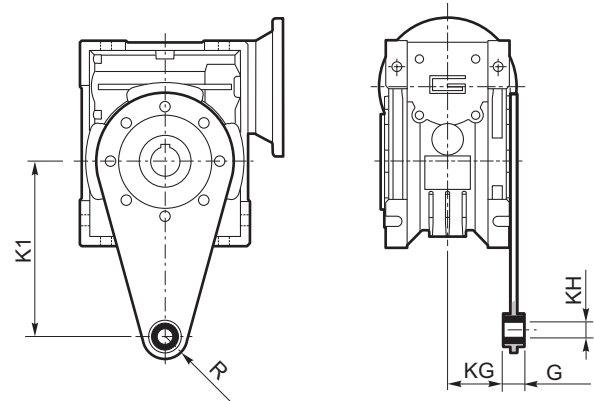
| | d h7 | B | B1 | G1 | L | L1 | f | b1 | t1 |
|---------------|---------|----|------|----|-----|-----|----|----|----|
| CM 030 | 14 | 30 | 32.5 | 63 | 102 | 128 | M6 | 5 | 16 |



Braccio di reazione

Torque arm

| | K1 | G | KG | KH | R |
|---------------|----|----|----|----|----|
| CM 030 | 85 | 14 | 23 | 8 | 15 |



Архангельск (8182)63-90-72
Астана (7172)727-132
Астрахань (8512)99-46-04
Барнаул (3852)73-04-60
Белгород (4722)40-23-64
Брянск (4832)59-03-52
Владивосток (423)249-28-31
Волгоград (844)278-03-48
Вологда (8172)26-41-59
Воронеж (473)204-51-73
Екатеринбург (343)384-55-89

Иваново (4932)77-34-06
Ижевск (3412)26-03-58
Казань (843)206-01-48
Калининград (4012)72-03-81
Калуга (4842)92-23-67
Кемерово (3842)65-04-62
Киров (8332)68-02-04
Краснодар (861)203-40-90
Красноярск (391)204-63-61
Курск (4712)77-13-04
Липецк (4742)52-20-81

Магнитогорск (3519)55-03-13
Москва (495)268-04-70
Мурманск (8152)59-64-93
Набережные Челны (8552)20-53-41
Нижний Новгород (831)429-08-12
Новокузнецк (3843)20-46-81
Новосибирск (383)227-86-73
Омск (3812)21-46-40
Орел (4862)44-53-42
Оренбург (3532)37-68-04
Пенза (8412)22-31-16

Пермь (342)205-81-47
Ростов-на-Дону (863)308-18-15
Рязань (4912)46-61-64
Самара (846)206-03-16
Санкт-Петербург (812)309-46-40
Саратов (845)249-38-78
Севастополь (8692)22-31-93
Симферополь (3652)67-13-56
Смоленск (4812)29-41-54
Сочи (862)225-72-31
Ставрополь (8652)20-65-13

Сургут (3462)77-98-35
Тверь (4822)63-31-35
Томск (3822)98-41-53
Тула (4872)74-02-29
Тюмень (3452)66-21-18
Ульяновск (8422)24-23-59
Уфа (347)229-48-12
Хабаровск (4212)92-98-04
Челябинск (351)202-03-61
Череповец (8202)49-02-64
Ярославль (4852)69-52-93