

Архангельск (8182)63-90-72
Астана (7172)727-132
Астрахань (8512)99-46-04
Барнаул (3852)73-04-60
Белгород (4722)40-23-64
Брянск (4832)59-03-52
Владивосток (423)249-28-31
Волгоград (844)278-03-48
Вологда (8172)26-41-59
Воронеж (473)204-51-73
Екатеринбург (343)384-55-89

Иваново (4932)77-34-06
Ижевск (3412)26-03-58
Казань (843)206-01-48
Калининград (4012)72-03-81
Калуга (4842)92-23-67
Кемерово (3842)65-04-62
Киров (8332)68-02-04
Краснодар (861)203-40-90
Красноярск (391)204-63-61
Курск (4712)77-13-04
Липецк (4742)52-20-81

Магнитогорск (3519)55-03-13
Москва (495)268-04-70
Мурманск (8152)59-64-93
Набережные Челны (8552)20-53-41
Нижний Новгород (831)429-08-12
Новокузнецк (3843)20-46-81
Новосибирск (383)227-86-73
Омск (3812)21-46-40
Орел (4862)44-53-42
Оренбург (3532)37-68-04
Пенза (8412)22-31-16

Пермь (342)205-81-47
Ростов-на-Дону (863)308-18-15
Рязань (4912)46-61-64
Самара (846)206-03-16
Санкт-Петербург (812)309-46-40
Саратов (845)249-38-78
Севастополь (8692)22-31-93
Симферополь (3652)67-13-56
Смоленск (4812)29-41-54
Сочи (862)225-72-31
Ставрополь (8652)20-65-13

Сургут (3462)77-98-35
Тверь (4822)63-31-35
Томск (3822)98-41-53
Тула (4872)74-02-29
Тюмень (3452)66-21-18
Ульяновск (8422)24-23-59
Уфа (347)229-48-12
Хабаровск (4212)92-98-04
Челябинск (351)202-03-61
Череповец (8202)49-02-64
Ярославль (4852)69-52-93

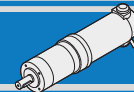
www.inctecno.nt-rt.ru || ion@nt-rt.ru

DC Планетарные мотор-редукторы

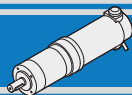
INTECNO

MICRO Motoriduttori C.C. Epicicloidali
D.C. MICRO Planetary Gearmotors





Indice	Index	Pag. Page
Caratteristiche tecniche	<i>Technical features</i>	B2
Designazione	<i>Classification</i>	B2
Simbologia	<i>Symbols</i>	B2
Lubrificazione	<i>Lubrication</i>	B2
Carichi radiali	<i>Radial loads</i>	B3
Rapporti	<i>Ratios</i>	B3
PK-P32 con motore C.C.	<i>PK-P32 with DC motor</i>	B4
PM32 LN con motore C.C.	<i>PM32 LN with DC motor</i>	B6
PK42 con motore C.C.	<i>PK42 with DC motor</i>	B8
P42 con motore C.C.	<i>P42 with DC motor</i>	B12
PK-P52 con motore C.C.	<i>PK-P52 with DC motor</i>	B16



Caratteristiche tecniche

Technical features

Le caratteristiche principali dei motoriduttori epicicloidali a corrente continua della serie PK-P-PM LN sono:

- Alimentazione in bassa tensione 12/24 Vcc
- Possibilità di montaggio encoder
- Potenze motori disponibili da 8 a 250W S2
- Magneti in ferrite
- Lubrificazione permanente a grasso

Soluzione PK-SB:

- Completamente in plastica
- Bronzina su albero di uscita

Soluzione PK-BB:

- Mix plastica/metallo
- Doppio cuscinetto su albero di uscita

Soluzione P:

- Completamente in metallo
- Doppio cuscinetto su albero di uscita

Soluzione PM LN:

- Versione bassa rumorosità della versione P

The main features of planetary gearmotors range PK-P-PM LN series are:

- Low voltage power supply 12/24 Vdc
- Suitable for encoder assembly
- Motor power ratings available from 8 up to 250W S2
- Ferrite magnets
- Permanent grease long life lubrication

PK-SB solution:

- Completely made out of plastic
- Sintered bearing on output shaft

PK-BB solution:

- Plastic/metal mix
- Double ball bearing on output shaft

P solution:


- Completely made out of metal
- Double ball bearing on output shaft

PM LN solution:

- Low noise version of P solution

Designazione

Classification

RIDUTTORE / GEARBOX					MOTORE / MOTOR		
PK	42	2	46	BB	EC035	24V	—
Tipo Type	Grandezza Size	Stadi riduttore Gearbox stages	Rapporto in Ratio in	Versione Version	Tipo Type	Tensione Voltage	Opzioni Options
PK	32 42 52	1 2 3 4	Vedere tabelle See tables	SB BB	EC008 EC016 EC020 EC030 EC035 EC050 EC070 EC100 EC180	12V 24V	Encoder 
P				-			
PM	32			LN			

Simbologia

Symbols

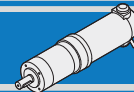
Ns	n° stadi / No. stages	Pn	[W]	Potenza nominale / Nominal power
in	rapporto nominale / nominal ratio	V	[V]	Tensione / Voltage
ir	rapporto reale / real ratio	I	[A]	Absorbimento / Current
M ₂	[Nm] coppia in uscita in funzionamento continuativo S1 output torque for continuous operation S1	IC		Classe di isolamento termico / Thermal insulation class
Rd	rendimento dinamico / efficiency	FF		Fattore di forma / Form factor
R ₂	[N] massimo carico radiale al centro dell'albero uscita max. radial load at output shaft centre	Mn	[Nm]	Coppia / Torque
A ₂	[N] massimo carico assiale / max. axial load	n ₁	[Rpm]	Giri / Speed
		IP		Grado di protezione / Enclosure protection
		Kg		Peso / Weight

Lubrificazione

Lubrication

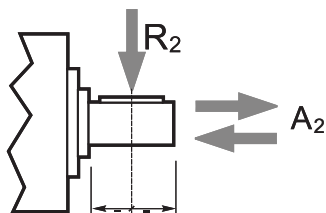
I riduttori epicicloidali sono lubrificati in modo permanente, non richiedono quindi ulteriore manutenzione. Questo gli consente di essere installati praticamente ovunque. Temperatura ambiente 0 ÷ 40 °C (in assenza di congelamento ed in assenza di condensa). Per temperature diverse, contattare nostro UT.

Planetary gearboxes are life-time lubricated with grease, therefore they are maintenance free. They can be installed in any location. Ambient temperature 0 ÷ 40 °C (in the absence of freezing and condensation). For temperature outside this range please contact our technical dept.



Carichi radiali

Radial loads



Ns	Carichi Radiali R ₂ [N] / Radial Load R ₂ [N]								
	PK32SB	PK32BB	P32	PM32LN	PK42SB	PK42BB	P42	PK52BB	P52
1	15	40	40	40	15	160	160	200	200
2	30	70	70	70	30	230	230	320	320
3	45	100	100	100	45	300	300	450	450
4	45	100	130	130	45	300	360	500	500

Ns	Carichi Assiali A ₂ [N] / Axial Load A ₂ [N]								
	PK32SB	PK32BB	P32	PM32LN	PK42SB	PK42BB	P42	PK52BB	P52
1	5	10	10	10	5	50	50	60	60
2	10	20	20	20	10	80	80	100	100
3	15	30	30	30	30	110	110	150	150
4	15	30	40	40	30	110	140	200	200

Rapporti

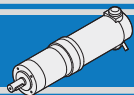
Ratios

PK SB BB / P 32 42 52		
Ns	in	ir
1	4	3.7
	4	4.28
	5	5.18
	7	6.75
2	14	13.73
	16	15.88
	18	18.36
	19	19.2
	22	22.2
	25	25.01
	27	26.85
	29	28.93
	35	34.97
	46	45.56
3	51	50.89
	59	58.85
	68	68.06
	71	71.16
	79	78.71
	93	92.7
	95	95.17
	100	99.5
	107	107.2
	115	115.07
	124	123.97
	130	129.62
	139	139.13
	150	149.9
	169	168.84
	181	181.24
	195	195.26
236	236.09	
308	307.54	
4	a richiesta	on request

PM 32 LN		
Ns	in	ir
1	4	3.7
	4	4.28
	5	5.18
	7	6.75
2	14	13.73
	16	15.88
	18	18.36
	19	19.2
	22	22.2
	25	25.01
	27	26.85
	29	28.93
	35	34.97
	46	45.56
3	51	50.89
	59	58.85
	68	68.06
	71	71.16
	79	78.71
	93	92.7
	95	95.17
	100	99.5
	107	107.2
	115	115.07
	124	123.97
	130	129.62
	139	139.13
	150	149.9
	169	168.84
	181	181.24
	195	195.26
236	236.09	
308	307.54	
4	369	368.76
	721	720.98

DC

PK-P-PM



MICRO MOTORIDUTTORI C.C. EPICICLOIDALI D.C. MICRO PLANETARY GEARMOTORS

PK-P32 con motore C.C.

PK-P32 with DC motor



PK32SB								EC008				EC016			
Ns	in	ir	M ₂ [Nm]	Rd	R ₂ [N]	A ₂ [N]	Kg	S1 12V		S1 24V		S1 12V		S1 24V	
								[Nm]	[rpm]	[Nm]	[rpm]	[Nm]	[rpm]	[Nm]	[rpm]
1	4	3.70	0.4	0.75	15	5	0.1	0.06	851	0.06	946	0.1	811	0.1	811
	7	6.75						0.1	467	0.1	519	0.18	444	0.18	444
2	14	13.73	1	0.7	30	10	0.12	0.19	229	0.19	255	0.34	218	0.34	218
	25	25.01						0.35	126	0.35	140	0.61	120	0.61	120
	46	45.56						0.64	69	0.64	77	1.12	66	1.12	66
3	68	68.06	2	0.65	45	15	0.13	0.88	46	0.88	51	1.55	44	1.55	44
	93	92.70						1.21	34	1.21	38	2.11	32	2.11	32
	169	168.84						2.2	19	2.2	21	3.84	18	3.84	18
	308	307.54						4	10	4	11	7	10	7	10



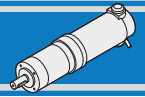
PK32BB								EC008				EC016			
Ns	in	ir	M ₂ [Nm]	Rd	R ₂ [N]	A ₂ [N]	Kg	S1 12V		S1 24V		S1 12V		S1 24V	
								[Nm]	[rpm]	[Nm]	[rpm]	[Nm]	[rpm]	[Nm]	[rpm]
1	4	3.70	0.6	0.75	40	10	0.12	0.06	851	0.06	946	0.1	811	0.1	811
	7	6.75						0.1	467	0.1	519	0.18	444	0.18	444
2	14	13.73	1.5	0.7	70	20	0.14	0.19	229	0.19	255	0.34	218	0.34	218
	25	25.01						0.35	126	0.35	140	0.61	120	0.61	120
	46	45.56						0.64	69	0.64	77	1.12	66	1.12	66
3	68	68.06	3	0.65	100	30	0.15	0.88	46	0.88	51	1.55	44	1.55	44
	93	92.70						1.21	34	1.21	38	2.11	32	2.11	32
	169	168.84						2.2	19	2.2	21	3.84	18	3.84	18
	308	307.54						4	10	4	11	7	10	7	10



P32								EC008				EC016			
Ns	in	ir	M ₂ [Nm]	Rd	R ₂ [N]	A ₂ [N]	Kg	S1 12V		S1 24V		S1 12V		S1 24V	
								[Nm]	[rpm]	[Nm]	[rpm]	[Nm]	[rpm]	[Nm]	[rpm]
1	4	3.70	0.75	0.8	40	10	0.16	0.06	851	0.06	946	0.11	811	0.11	811
	7	6.75						0.11	467	0.1	519	0.19	444	0.19	444
2	14	13.73	2.3	0.75	70	20	0.21	0.21	229	0.19	255	0.37	218	0.37	218
	25	25.01						0.38	126	0.35	140	0.66	120	0.66	120
	46	45.56						0.68	69	0.64	77	1.21	66	1.21	66
3	68	68.06	4.5	0.7	100	30	0.26	0.95	46	0.88	51	1.67	44	1.67	44
	93	92.70						1.3	34	1.21	38	2.27	32	2.27	32
	169	168.84						2.36	19	2.2	21	4.14	18	4.14	18
	308	307.54						4.31	10	4	11	7.54	10	7.54	10

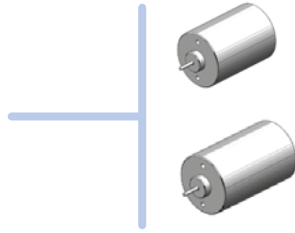
Nota: le caselle in colore grigio indicano il superamento della coppia massima sopportata dal riduttore per il servizio in S1.
Per vedere tutti i rapporti di riduzione disponibili, vedere tabella a pag. B3

N.B.: boxes in grey indicate that maximum torque withstood by gear reducer for service in S1 is exceeded.
See the table on page B3 for all available ratios.



PK-P32 con motore C.C.

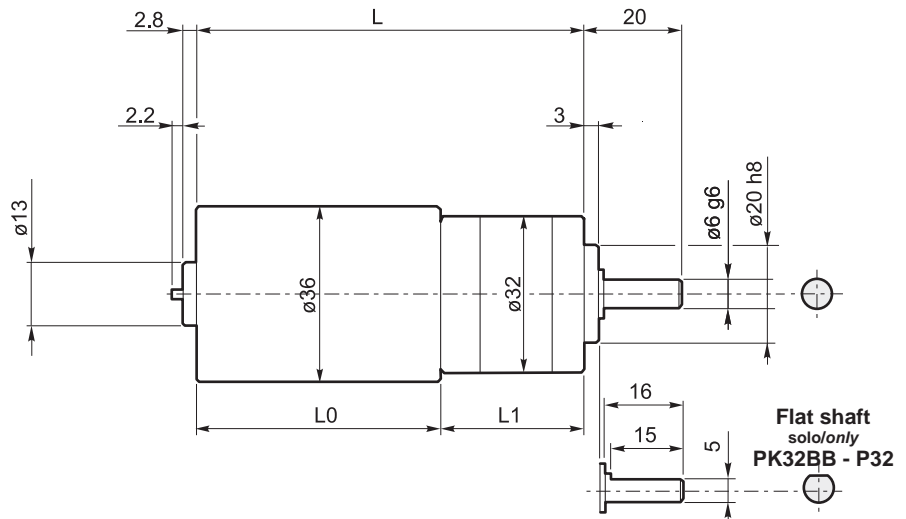
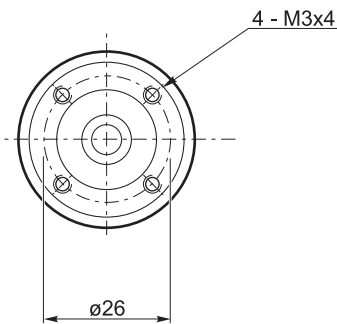
PK-P32 with DC motor



EC008 8 Watt
12/24 V

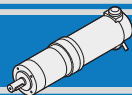
EC016 16 Watt
12/24 V

Tipo Type	Servizio Duty	Pn [W]	V [V]	I [A]	IC	FF	Mn [mNm]	n ₁ [rpm]	IP	Kg
EC008.120	S1	6.6	12	0.8	A	1	20	3150	20	0.15
EC008.240		7.3	24	0.38				3500		
EC016.120	S1	16	12	1.4	A	1	35	3000	20	0.2
EC016.240			24	0.7						



	Ns	L1	EC008		EC016	
			L0	L	L0	L
PK32SB	1	33	50	83	57	90
	2	42.5		92.5		99.5
	3	52		102		109
PK32BB P32	1	29.5		79.5		86.5
	2	39		89		96
	3	48.5		98.5		105.5

DC
PK-P-PM



MICRO MOTORIDUTTORI C.C. EPICICLOIDALI D.C. MICRO PLANETARY GEARMOTORS

PM32 LN con motore C.C.

PM32 LN with DC motor

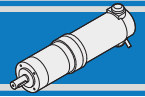


Low Noise

PM32 LN								EC008				EC016			
Ns	in	ir	M ₂ [Nm]	Rd	R ₂ [N]	A ₂ [N]	Kg	S1 12V		S1 24V		S1 12V		S1 24V	
								[Nm]	[rpm]	[Nm]	[rpm]	[Nm]	[rpm]	[Nm]	[rpm]
1	5	5.18	0.75	0.8	40	10	0.16	0.08	608	0.08	676	0.14	579	0.14	579
2	19	19.2	2.3	0.75	70	20	0.21	0.29	164	0.29	182	0.5	156	0.5	156
	27	26.85						0.40	117	0.40	130	0.7	112	0.7	112
3	71	71.16	4.5	0.7	100	30	0.26	1.00	44	1.00	49	1.74	42	1.74	42
	139	139.13						1.95	23	1.95	25	3.4	22	3.4	22
4	369	368.76	4.5	0.65	130	40	0.31	4.79	9	4.79	9	8.4	8	8.4	8
	721	720.98						9.37	4	9.37	5	16.4	4	16.4	4

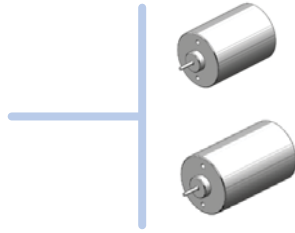
Nota: le caselle in colore grigio indicano il superamento della coppia massima sopportata dal riduttore per il servizio in S1.
Per vedere tutti i rapporti di riduzione disponibili, vedere tabella a pag. B3

N.B.: boxes in grey indicate that maximum torque withstood by gear reducer for service in S1 is exceeded.
See the table on page B3 for all available ratios.



PM32 LN con motore C.C.

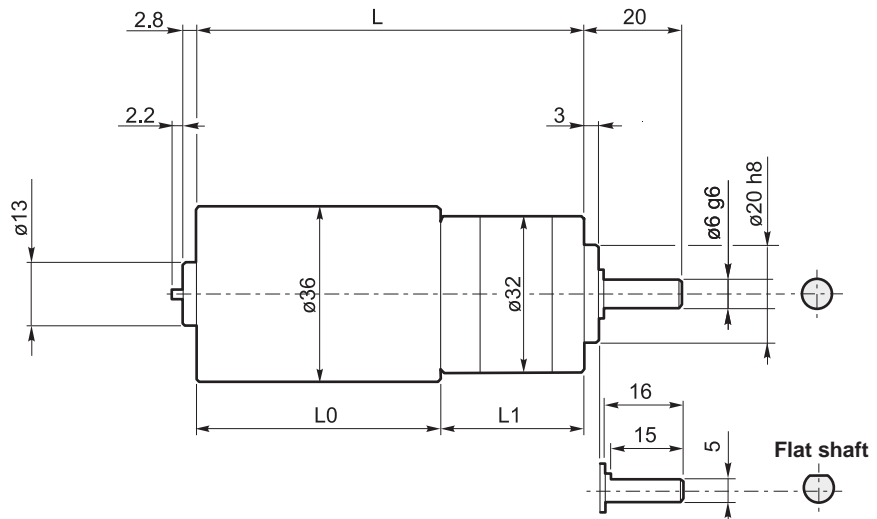
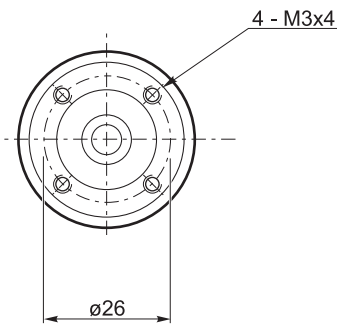
PM32 LN with DC motor



EC008 8 Watt
12/24 V

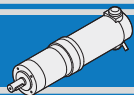
EC016 16 Watt
12/24 V

Tipo Type	Servizio Duty	Pn [W]	V [V]	I [A]	IC	FF	Mn [mNm]	n ₁ [rpm]	IP	Kg
EC008.120	S1	6.6	12	0.8	A	1	20	3150	20	0.15
EC008.240		7.3	24	0.38				3500		
EC016.120	S1	16	12	1.4	A	1	35	3000	20	0.2
EC016.240			24	0.7						



PM32 LN	Ns	L1	EC008		EC016	
			L0	L	L0	L
	1	29.5	50	79.5	57	86.5
2	39	89		96		
3	48.5	98.5		105.5		
4	58	108		115		

DC
PK-P-PM



MICRO MOTORIDUTTORI C.C. EPICICLOIDALI D.C. MICRO PLANETARY GEARMOTORS

PK con motore C.C.

PK- with DC motor



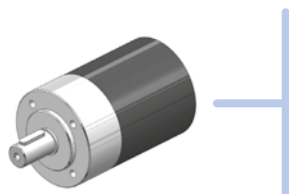
PK42SB								EC020			
Ns	in	ir	M ₂ [Nm]	Rd	R ₂ [N]	A ₂ [N]	Kg	S1 12/24V		S2 12/24V	
								[Nm]	[rpm]	[Nm]	[rpm]
1	4	3.70	0.75	0.8	40	10	0.16	0.18	770	0.3	770
	7	6.75						0.32	422	0.54	422
2	14	13.73	2.3	0.75	70	20	0.21	0.62	208	1.03	208
	25	25.01						1.13	114	1.88	114
	46	45.56						2.05	63	3.42	63
3	68	68.06	4.5	0.7	100	30	0.26	2.86	42	4.76	42
	93	92.70						3.89	31	6.49	31
	169	168.84						7.09	17	11.82	17
	308	307.54						12.92	9	21.53	9



PK42BB								EC020				EC030			
Ns	in	ir	M ₂ [Nm]	Rd	R ₂ [N]	A ₂ [N]	Kg	S1 12/24V		S2 12/24V		S1 24V		S2 24V	
								[Nm]	[rpm]	[Nm]	[rpm]	[Nm]	[rpm]	[Nm]	[rpm]
1	4	3.70	2	0.80	160	50	0.4	0.18	770	0.3	770	0.3	946	0.5	946
	7	6.75						0.32	422	0.54	422	0.54	519	0.9	519
2	14	13.73	5	0.75	230	80	0.5	0.62	208	1.03	208	1.03	255	1.6	255
	25	25.01						1.13	114	1.88	114	1.88	140	3	140
	46	45.56						2.05	63	3.42	63	3.42	77	5.5	77
3	68	68.06	10	0.70	300	110	0.6	2.86	42	4.76	42	4.76	51	7.6	51
	93	92.70						3.89	31	6.49	31	6.49	38	10.4	38
	169	168.84						7.09	17	11.8	17	11.8	21	18.9	21
	308	307.54						12.9	9	21.5	9	21.5	11	34	11

Nota: le caselle in colore grigio indicano il superamento della coppia massima sopportata dal riduttore per il servizio in S1.
Per vedere tutti i rapporti di riduzione disponibili, vedere tabella a pag. B3

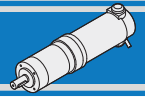
N.B.: boxes in grey indicate that maximum torque withstood by gear reducer for service in S1 is exceeded.
See the table on page B3 for all available ratios.



**EC020 30 Watt
12/24 V**

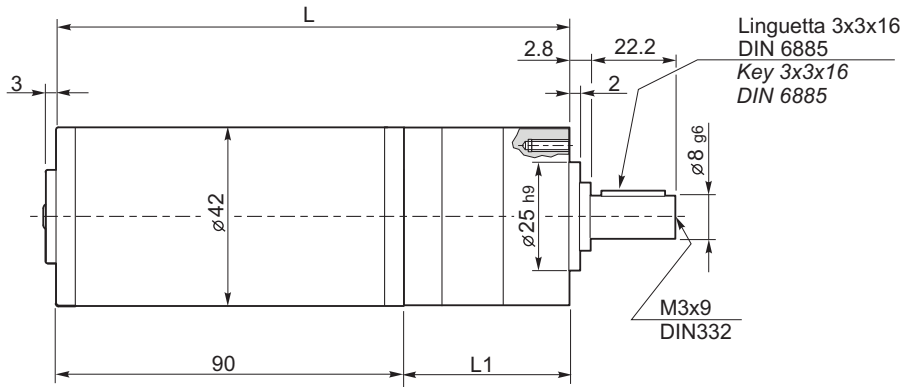
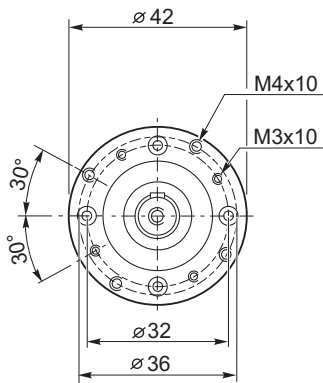
**EC030 50 Watt
24 V**

Tipo Type	Servizio Duty	Pn [W]	V [V]	I [A]	IC	FF	Mn [Nm]	n ₁ [rpm]	IP	Kg
EC020.120	S1	20	12	3.2	B	1	0.06	2850	20	0.4
	S2 6'	30		4.6			0.10			
EC020.24E	S1	20	24	1.5			0.06	2850		
	S2 6'	30		2.5			0.10			
EC030.240	S1	30	24	2	B	1	0.10	3500	20	0.53
EC030.24E	S2 6'	50		3.5			0.16			

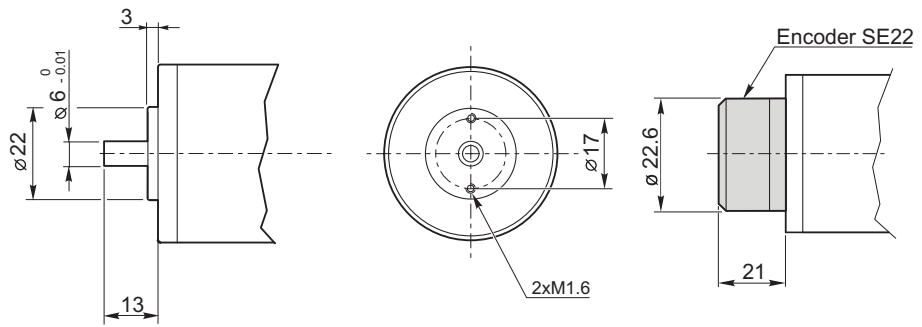


PK con motore C.C.

PK- with DC motor



EC020 - EC030

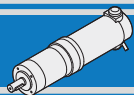


EC020.24E - EC030.24E

		EC020 - EC20.24E - EC030 - EC030.24E	
		Ns	L1
PK42SB PK42BB		1	60
		2	73
		3	86
			L
			150
			163
			176

DC

PK-P-PM



MICRO MOTORIDUTTORI C.C. EPICICLOIDALI D.C. MICRO PLANETARY GEARMOTORS

PK- con motore C.C.

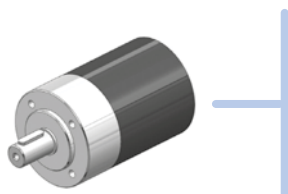
PK- with DC motor



PK42BB								EC035			
Ns	in	ir	M ₂ [Nm]	Rd	R ₂ [N]	A ₂ [N]	Kg	S1 12/24V		S2 12/24V	
								[Nm]	[rpm]	[Nm]	[rpm]
1	4	3.70	2	0.80	160	50	0.4	0.33	946	0.53	811
	7	6.75						0.59	519	0.97	444
2	14	13.73	5	0.75	230	80	0.5	1.13	255	1.85	218
	25	25.01						2.06	140	3.38	120
	46	45.56						3.76	77	6.15	66
3	68	68.06	10	0.70	300	110	0.6	5.24	51	8.58	44
	93	92.70						7.14	38	11.68	32
	169	168.84						13	21	21.27	18
	308	307.54						23.68	11	38.75	10

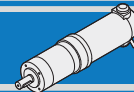
Nota: le caselle in colore grigio indicano il superamento della coppia massima sopportata dal riduttore per il servizio in S1.
Per vedere tutti i rapporti di riduzione disponibili, vedere tabella a pag. B3

N.B.: boxes in grey indicate that maximum torque withstood by gear reducer for service in S1 is exceeded.
See the table on page B3 for all available ratios.



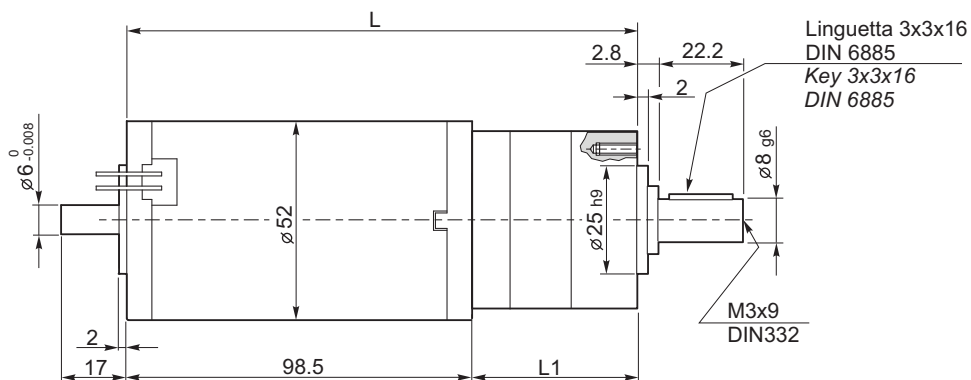
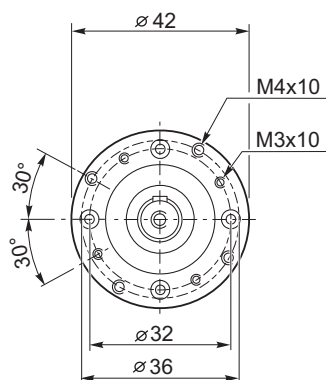
EC035 55 Watt
12/24 V

Tipo Type	Servizio Duty	Pn [W]	V [V]	I [A]	IC	FF	Mn [Nm]	n ₁ [rpm]	IP	Kg
EC035.120	S1	35	12	5.2	F	1	0.11	3500	44	0.8
	S2 9'	55		8.0			0.18	3000		
EC035.240	S1	35	24	2.6			0.11	3500		
	S2 9'	55		4.0			0.18	3000		



PK- con motore C.C.

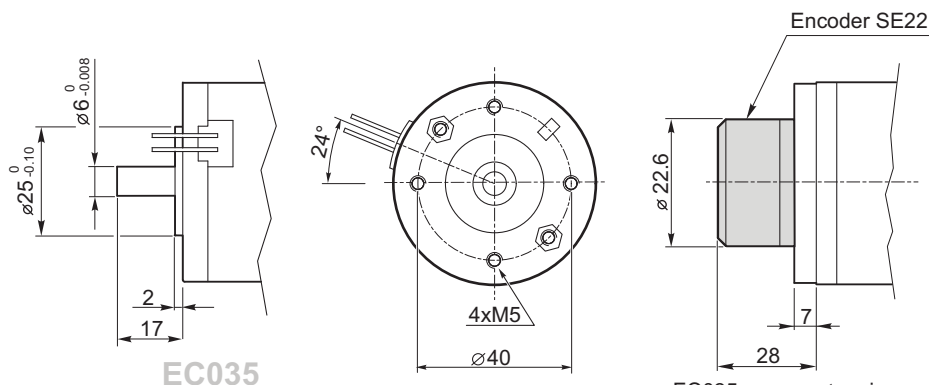
PK- with DC motor



Linguetta 3x3x16
 DIN 6885
 Key 3x3x16
 DIN 6885

M3x9
 DIN332

EC035



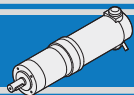
EC035

EC035: per montaggio encoder
 serve flangia AS204
 EC035: encoder assembling
 needs flange AS204

		EC035	
PK42BB	Ns	L1	L
	1	60	158.5
	2	73	171.5
	3	86	184.5

DC

PK-P-PM



MICRO MOTORIDUTTORI C.C. EPICICLOIDALI D.C. MICRO PLANETARY GEARMOTORS

P42 con motore C.C.

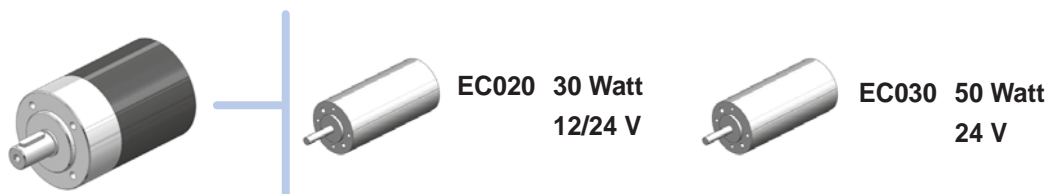
P42 with DC motor



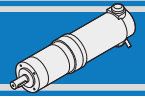
P42								EC020				EC030			
Ns	in	ir	M ₂ [Nm]	Rd	R ₂ [N]	A ₂ [N]	Kg	S1 12/24V		S2 12/24V		S1 24V		S2 24V	
								[Nm]	[rpm]	[Nm]	[rpm]	[Nm]	[rpm]	[Nm]	[rpm]
1	4	3.70	3.0	0.8	160	50	0.4	0.18	770	0.30	770	0.30	946	0.5	946
	7	6.75						0.32	422	0.54	422	0.54	519	0.9	519
2	14	13.73	7.5	0.75	230	80	0.5	0.62	208	1.03	208	1.03	255	1.6	255
	25	25.01						1.13	114	1.88	114	1.88	140	3	140
	46	45.56						2.05	63	3.442	63	3.442	77	5.5	77
3	68	68.06	15.0	0.7	300	110	0.6	2.86	42	4.76	42	4.76	51	7.6	51
	93	92.70						3.89	31	6.49	31	6.49	38	10.4	38
	169	168.84						7.09	17	11.8	17	11.8	21	18.9	21
	308	307.54						12.9	9	21.5	9	21.5	11	34.4	11

Nota: le caselle in colore grigio indicano il superamento della coppia massima sopportata dal riduttore per il servizio in S1.
Per vedere tutti i rapporti di riduzione disponibili, vedere tabella a pag. B3

N.B.: boxes in grey indicate that maximum torque withstood by gear reducer for service in S1 is exceeded.
See the table on page B3 for all available ratios.

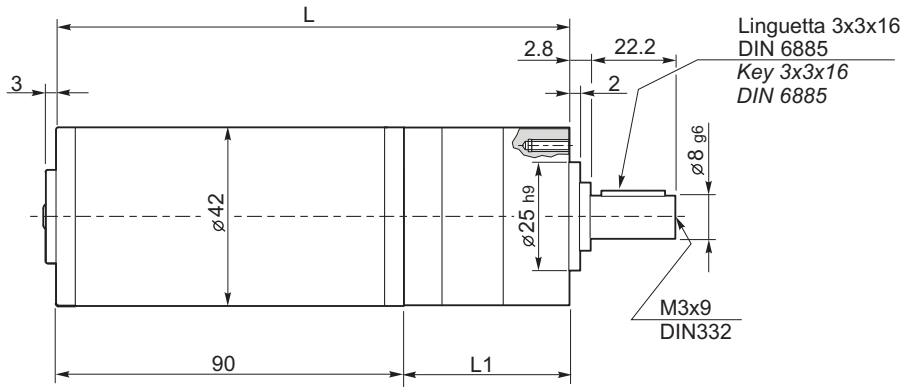
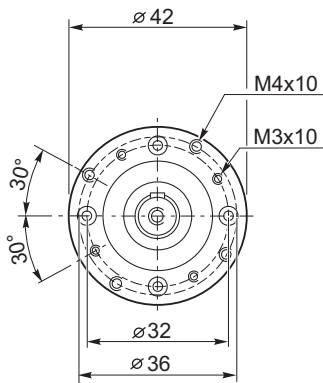


Tipo Type	Servizio Duty	Pn [W]	V [V]	I [A]	IC	FF	Mn [Nm]	n ₁ [rpm]	IP	Kg
EC020.120	S1	20	12	3.2	B	1	0.06	2850	20	0.4
	S2 6'	30		4.6			0.10			
EC020.24E	S1	20	24	1.5			0.06	2850		
	S2 6'	30		2.5			0.10			
EC030.240	S1	30	24	2	B	1	0.10	3500	20	0.53
EC030.24E	S2 6'	50		3.5			0.16			

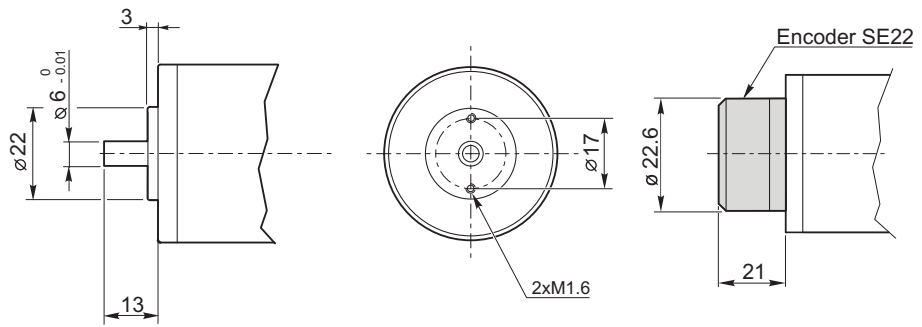


P42 con motore C.C.

P42 with DC motor



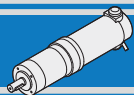
EC020 - EC030



EC020.24E - EC030.24E

		EC020 - EC20.24E - EC030 - EC030.24E	
P42	Ns	L1	L
	1	60	150
	2	73	163
	3	86	176

DC
PK-P-PM



MICRO MOTORIDUTTORI C.C. EPICICLOIDALI D.C. MICRO PLANETARY GEARMOTORS

P42 con motore C.C.

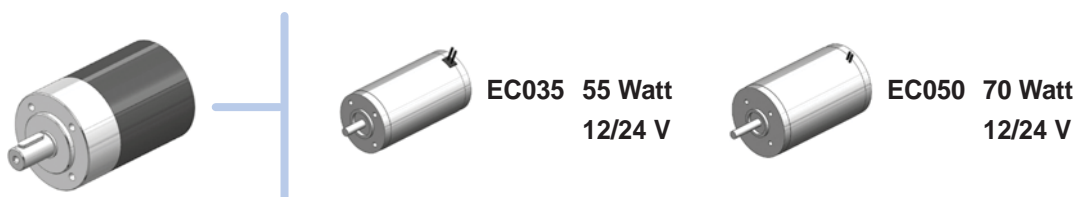
P42 with DC motor



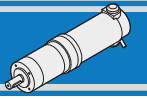
P42								EC035				EC050			
Ns	in	ir	M ₂ [Nm]	Rd	R ₂ [N]	A ₂ [N]	Kg	S1 12/24V		S2 12/24V		S1 12/24V		S2 12/24V	
								[Nm]	[rpm]	[Nm]	[rpm]	[Nm]	[rpm]	[Nm]	[rpm]
1	4	3.70	3.0	0.8	160	50	0.4	0.33	946	0.53	811	0.47	811	0.65	811
	7	6.75						0.59	519	0.97	444	0.86	444	1.19	444
2	14	13.73	7.5	0.75	230	80	0.5	1.13	255	1.85	218	1.65	218	2.27	218
	25	25.01						2.06	140	3.38	120	3	120	4.13	120
	46	45.56						3.76	77	6.15	66	5.47	66	7.52	66
3	68	68.06	15.0	0.7	300	110	0.6	5.24	51	8.58	44	7.62	44	10.48	44
	93	92.70						7.14	38	11.68	32	10.38	32	14.28	32
	169	168.84						13	21	21.27	18	18.91	18	26	18
	308	307.54						23.68	11	38.75	10	34.44	10	47.36	10

Nota: le caselle in colore grigio indicano il superamento della coppia massima sopportata dal riduttore per il servizio in S1.
Per vedere tutti i rapporti di riduzione disponibili, vedere tabella a pag. B3

N.B.: boxes in grey indicate that maximum torque withstood by gear reducer for service in S1 is exceeded.
See the table on page B3 for all available ratios.

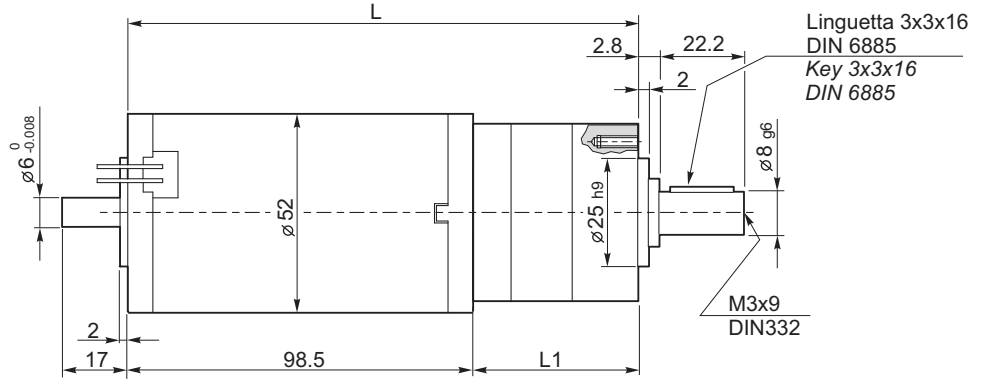
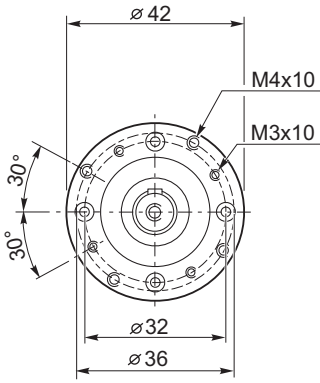


Tipo Type	Servizio Duty	Pn [W]	V [V]	I [A]	IC	FF	Mn [Nm]	n ₁ [rpm]	IP	Kg
EC035.120	S1	35	12	5.2	F	1	0.11	3500	44	0.8
	S2 9'	55		8.0			0.18	3000		
EC035.240	S1	35	24	2.6			0.11	3500		
	S2 9'	55		4.0			0.18	3000		
EC050.12E	S1	50	12	6.8	F	1	0.16	3000	44	1.2
	S2 9'	70		9.4			0.22			
EC050.24E	S1	50	24	3.4			0.16			
	S2 9'	70		4.7			0.22			

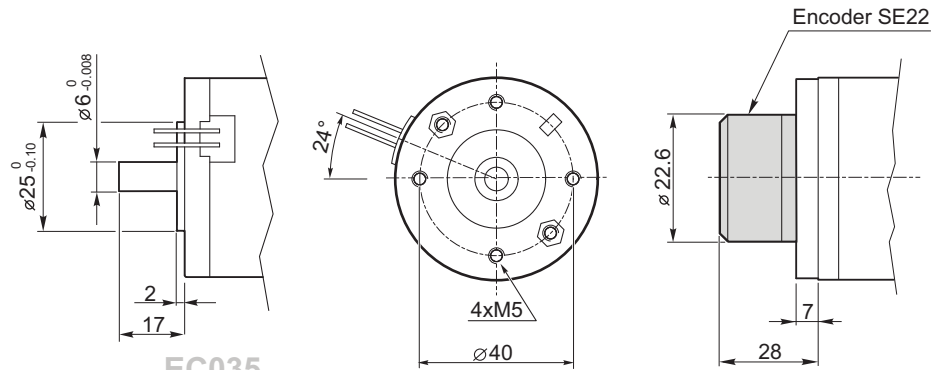


P42 con motore C.C.

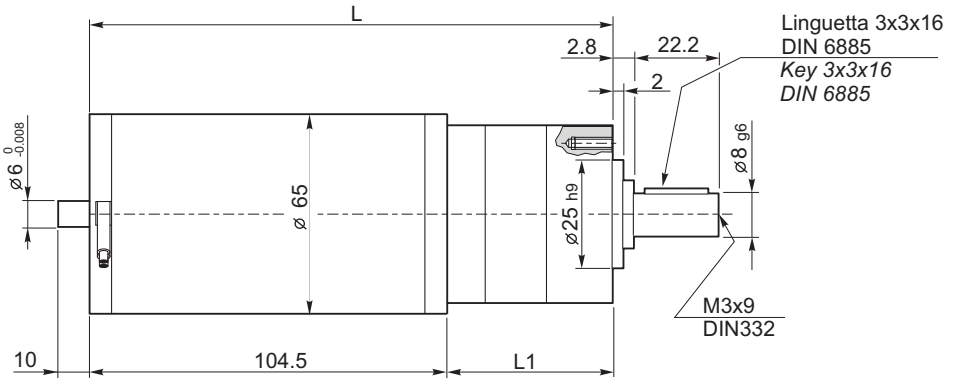
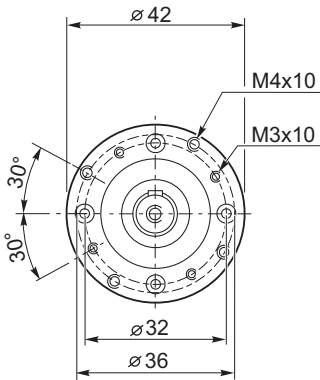
P42 with DC motor



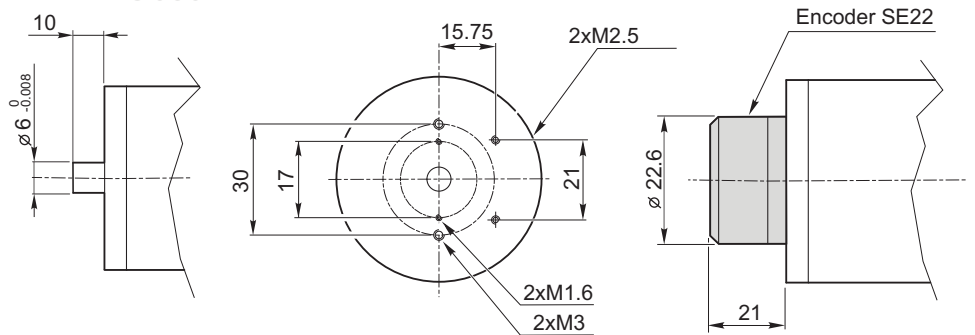
EC035



EC035



EC050

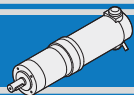


EC050

P42			EC035	EC050
	Ns	L1	L	L
	1	60	158.5	163
	2	73	171.5	176
	3	86	184.5	189

DC

PK-P-PM



MICRO MOTORIDUTTORI C.C. EPICICLOIDALI D.C. MICRO PLANETARY GEARMOTORS

PK-P52 con motore C.C.

PK-P52 with DC motor



PK52BB								EC050				EC070	
Ns	in	ir	M ₂ [Nm]	Rd	R ₂ [N]	A ₂ [N]	Kg	S1 12/24V		S2 12/24V		S2 12/24V	
								[Nm]	[rpm]	[Nm]	[rpm]	[Nm]	[rpm]
1	4	3.70	3.0	0.75	200	60	0.4	0.44	811	0.61	811	0.86	811
	7	6.75						1.11	444	1.11	444	1.57	444
2	14	13.73	8.0	0.7	320	100	0.5	1.53	218	2.11	218	2.97	218
	25	25.01						2.8	120	3.85	120	5.42	120
	46	45.56						5.10	66	7.01	66	9.88	66
3	68	68.06	17.0	0.65	450	150	0.6	7.08	44	9.73	44	13.71	44
	93	92.70						9.64	32	13.26	32	18.67	32
	169	168.84						17.55	18	24.14	18	34.02	18
	308	307.54						31.98	10	43.98	10	61.97	10

Nota: le caselle in colore grigio indicano il superamento della coppia massima sopportata dal riduttore per il servizio in S1.
Per vedere tutti i rapporti di riduzione disponibili, vedere tabella a pag. B3

N.B.: boxes in grey indicate that maximum torque withstood by gear reducer for service in S1 is exceeded.
See the table on page B3 for all available ratios.

P52								EC050				EC070	
Ns	in	ir	M ₂ [Nm]	Rd	R ₂ [N]	A ₂ [N]	Kg	S1 12/24V		S2 12/24V		S2 12/24V	
								[Nm]	[rpm]	[Nm]	[rpm]	[Nm]	[rpm]
1	4	3.70	4.0	0.8	200	60	0.7	0.47	811	0.65	811	0.92	811
	7	6.75						0.86	444	1.19	444	1.67	444
2	14	13.73	12.0	0.75	320	100	0.9	1.65	219	2.27	219	3.19	218
	25	25.01						3.0	120	4.13	120	5.81	120
	46	45.56						5.47	66	7.52	66	10.59	66
3	68	68.06	25.0	0.7	450	150	1.1	7.62	44	10.48	44	14.77	44
	93	92.70						10.38	32	14.28	32	20.12	32
	169	168.84						18.9	18	26.0	18	36.64	18
	308	307.54						34.4	9.8	47.36	9.8	66.74	10

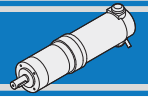


**EC050 70 Watt
12/24 V**



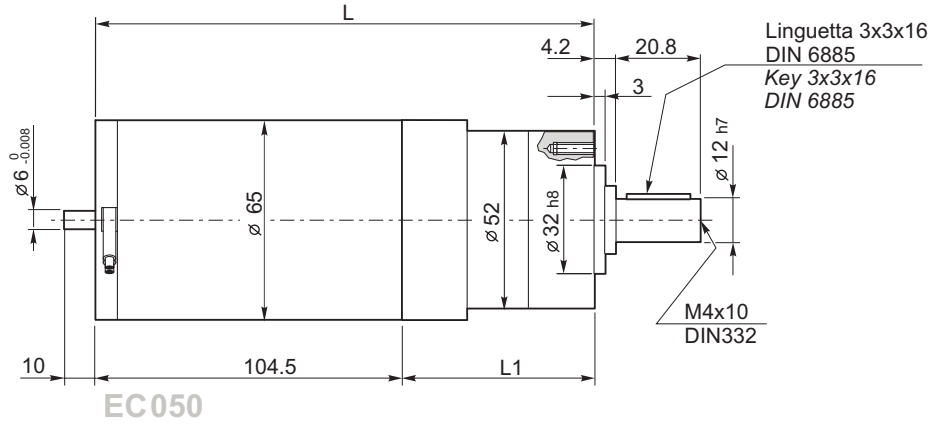
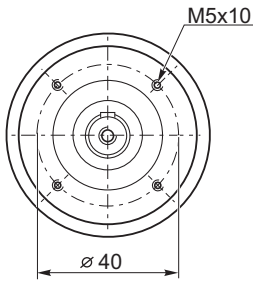
**EC070 100 Watt
12/24 V**

Tipo Type	Servizio Duty	Pn [W]	V [V]	I [A]	IC	FF	Mn [Nm]	n1 [rpm]	IP	Kg
EC050.12E	S1	50	12	6.8	F	1	0.16	3000	44	1.2
	S2 9'	70		9.4			0.22			
EC050.24E	S1	50	24	3.4			0.16			
	S2 9'	70		4.7			0.22			
EC070.120	S2 20'	100	12	11.8	F	1	0.31	3000	44	1.7
EC070.240	S2 20'	100	24	5.9			0.22			

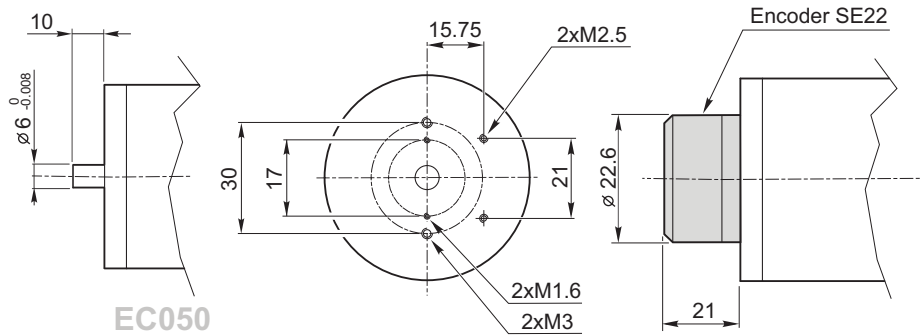


PK-P52 con motore C.C.

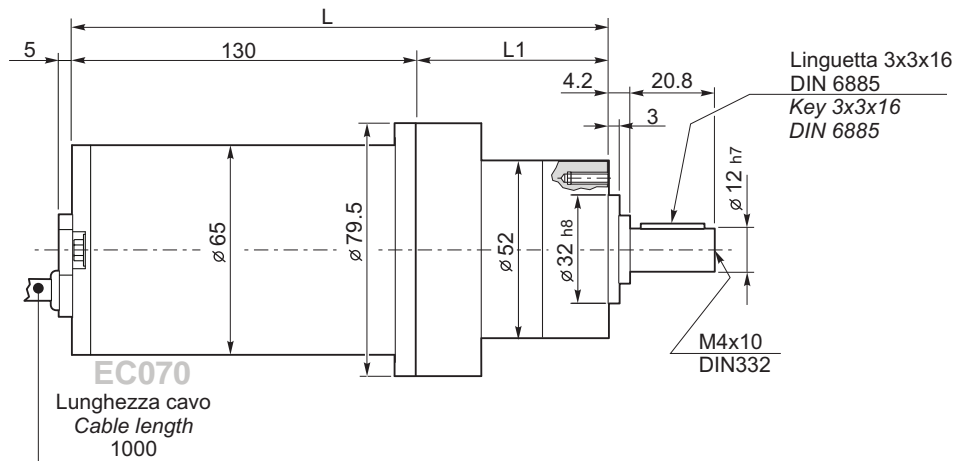
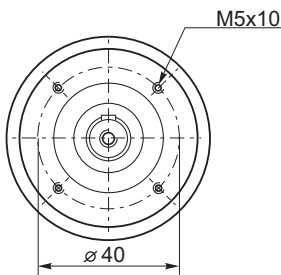
PK-P52 with DC motor



EC050



EC050



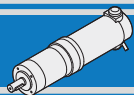
EC070

Lunghezza cavo
Cable length
1000

	Ns	EC050		EC070	
		L	L1	L	L1
PK52BB	1	177	72.5	202.5	72.5
	2	191	86.5	216.5	86.5
	3	205	100.5	230.5	100.5
P52	1	—	—	204	74
	2	—	—	218	88
	3	—	—	232	102

DC

PK-P-PM



MICRO MOTORIDUTTORI C.C. EPICICLOIDALI D.C. MICRO PLANETARY GEARMOTORS

P52 con motore C.C.

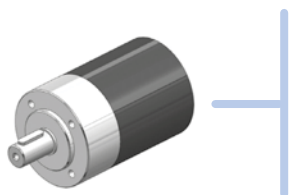
P52 with DC motor



P52								EC100				EC180			
Ns	in	ir	M ₂ [Nm]	Rd	R ₂ [N]	A ₂ [N]	Kg	S1 12/24V		S2 12/24V		S1 12/24V		S2 12/24V	
								[Nm]	[rpm]	[Nm]	[rpm]	[Nm]	[rpm]	[Nm]	[rpm]
1	4	3.70	4.0	0.8	200	60	0.7	0.92	811	1.27	811	1.69	811	2.37	811
	7	6.75						1.67	444	2.32	444	3.08	444	4.32	444
2	14	13.73	12.0	0.75	320	100	0.9	3.19	218	4.43	218	5.87	218	8.24	218
	25	25.01						5.81	120	8.07	120	10.69	120	15.01	120
	46	45.56						10.59	66	14.69	66	19.48	66	27.34	66
3	68	68.06	25.0	0.7	450	150	1.1	14.77	44	20.49	44	27.16	44	38.11	44
	93	92.70						20.12	32	27.9	32	36.99	32	51.91	32
	169	168.84						36.64	18	50.82	18	67.37	18	94.55	18
	308	307.54						66.74	10	92.57	10	122.7	10	177.2	10

Nota: le caselle in colore grigio indicano il superamento della coppia massima sopportata dal riduttore per il servizio in S1.
Per vedere tutti i rapporti di riduzione disponibili, vedere tabella a pag. B3

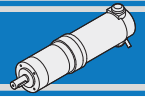
N.B.: boxes in grey indicate that maximum torque withstood by gear reducer for service in S1 is exceeded.
See the table on page B3 for all available ratios.



**EC100 140 Watt
12/24 V**

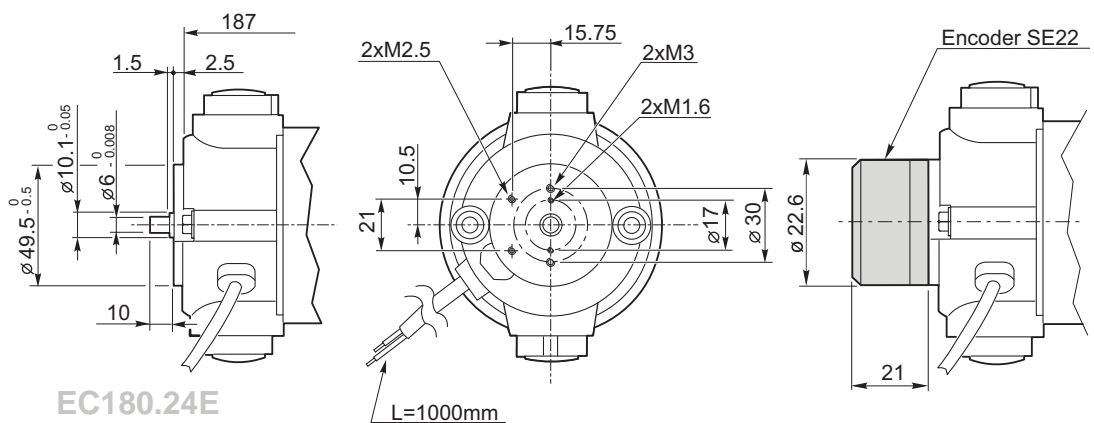
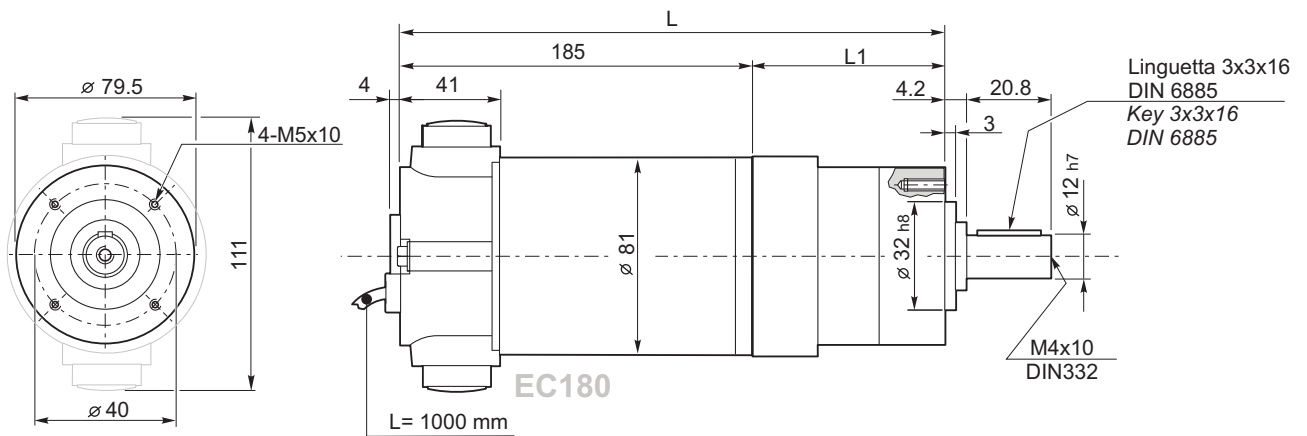
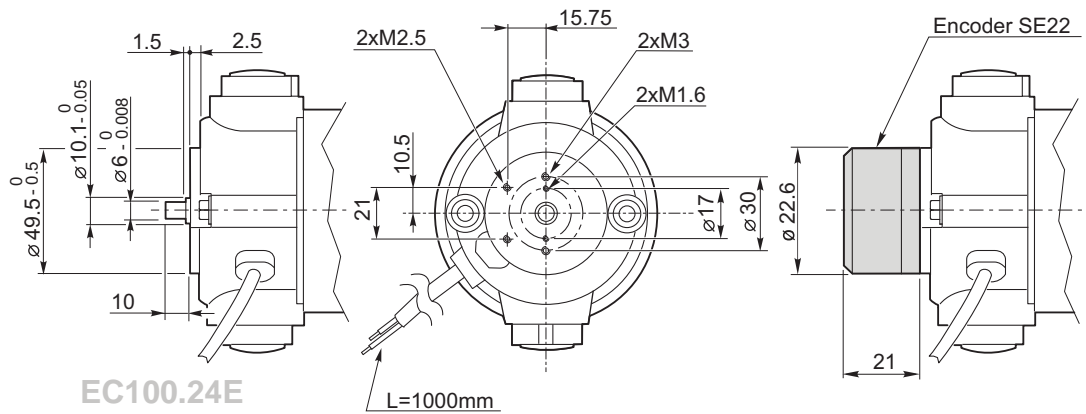
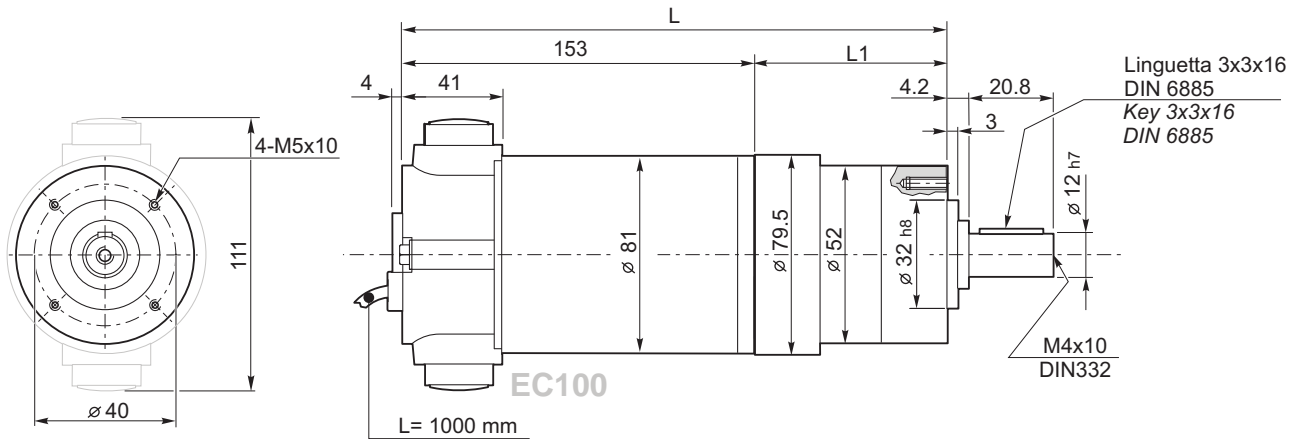
**EC180 250 Watt
12/24 V**

Tipo Type	Servizio Duty	P _n [W]	V [V]	I [A]	IC	FF	M _n [Nm]	n ₁ [rpm]	IP	Kg
EC100.120	S1	100	12	12	F	1	0.31	3000	44	2.7
	S2 25'	140		16.8			0.43			
EC100.240	S1	100	24	6			0.31			
EC100.24E	S2 25'	140		8.4			0.43			
EC180.120	S1	180	12	21.5	F	1	0.57	3000	44	3.4
	S2 25'	250		30			0.8			
EC180.240	S1	180	24	10.8			0.57			
EC180.24E	S2 25'	250		15			0.8			



P52 con motore C.C.

P52 with DC motor



P52	Ns	EC100		EC180	
		L	L1	L	L1
	1	227	74	259	74
	2	241	88	273	88
	3	255	102	287	102

DC

PK-P-PM

Архангельск (8182)63-90-72
Астана (7172)727-132
Астрахань (8512)99-46-04
Барнаул (3852)73-04-60
Белгород (4722)40-23-64
Брянск (4832)59-03-52
Владивосток (423)249-28-31
Волгоград (844)278-03-48
Вологда (8172)26-41-59
Воронеж (473)204-51-73
Екатеринбург (343)384-55-89

Иваново (4932)77-34-06
Ижевск (3412)26-03-58
Казань (843)206-01-48
Калининград (4012)72-03-81
Калуга (4842)92-23-67
Кемерово (3842)65-04-62
Киров (8332)68-02-04
Краснодар (861)203-40-90
Красноярск (391)204-63-61
Курск (4712)77-13-04
Липецк (4742)52-20-81

Магнитогорск (3519)55-03-13
Москва (495)268-04-70
Мурманск (8152)59-64-93
Набережные Челны (8552)20-53-41
Нижний Новгород (831)429-08-12
Новокузнецк (3843)20-46-81
Новосибирск (383)227-86-73
Омск (3812)21-46-40
Орел (4862)44-53-42
Оренбург (3532)37-68-04
Пенза (8412)22-31-16

Пермь (342)205-81-47
Ростов-на-Дону (863)308-18-15
Рязань (4912)46-61-64
Самара (846)206-03-16
Санкт-Петербург (812)309-46-40
Саратов (845)249-38-78
Севастополь (8692)22-31-93
Симферополь (3652)67-13-56
Смоленск (4812)29-41-54
Сочи (862)225-72-31
Ставрополь (8652)20-65-13

Сургут (3462)77-98-35
Тверь (4822)63-31-35
Томск (3822)98-41-53
Тула (4872)74-02-29
Тюмень (3452)66-21-18
Ульяновск (8422)24-23-59
Уфа (347)229-48-12
Хабаровск (4212)92-98-04
Челябинск (351)202-03-61
Череповец (8202)49-02-64
Ярославль (4852)69-52-93

www.inctecno.nt-rt.ru || ion@nt-rt.ru