

Архангельск (8182)63-90-72  
Астана (7172)727-132  
Астрахань (8512)99-46-04  
Барнаул (3852)73-04-60  
Белгород (4722)40-23-64  
Брянск (4832)59-03-52  
Владивосток (423)249-28-31  
Волгоград (844)278-03-48  
Вологда (8172)26-41-59  
Воронеж (473)204-51-73  
Екатеринбург (343)384-55-89

Иваново (4932)77-34-06  
Ижевск (3412)26-03-58  
Казань (843)206-01-48  
Калининград (4012)72-03-81  
Калуга (4842)92-23-67  
Кемерово (3842)65-04-62  
Киров (8332)68-02-04  
Краснодар (861)203-40-90  
Красноярск (391)204-63-61  
Курск (4712)77-13-04  
Липецк (4742)52-20-81

Магнитогорск (3519)55-03-13  
Москва (495)268-04-70  
Мурманск (8152)59-64-93  
Набережные Челны (8552)20-53-41  
Нижний Новгород (831)429-08-12  
Новокузнецк (3843)20-46-81  
Новосибирск (383)227-86-73  
Омск (3812)21-46-40  
Орел (4862)44-53-42  
Оренбург (3532)37-68-04  
Пенза (8412)22-31-16

Пермь (342)205-81-47  
Ростов-на-Дону (863)308-18-15  
Рязань (4912)46-61-64  
Самара (846)206-03-16  
Санкт-Петербург (812)309-46-40  
Саратов (845)249-38-78  
Севастополь (8692)22-31-93  
Симферополь (3652)67-13-56  
Смоленск (4812)29-41-54  
Сочи (862)225-72-31  
Ставрополь (8652)20-65-13

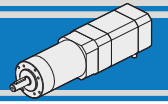
Сургут (3462)77-98-35  
Тверь (4822)63-31-35  
Томск (3822)98-41-53  
Тула (4872)74-02-29  
Тюмень (3452)66-21-18  
Ульяновск (8422)24-23-59  
Уфа (347)229-48-12  
Хабаровск (4212)92-98-04  
Челябинск (351)202-03-61  
Череповец (8202)49-02-64  
Ярославль (4852)69-52-93

[www.inctecno.nt-rt.ru](http://www.inctecno.nt-rt.ru) || [ion@nt-rt.ru](mailto:ion@nt-rt.ru)

# Планетарные мотор-редукторы INTECNO

*MICRO Motoriduttori Brushless Epicicloidali*  
*MICRO Brushless Planetary Gearmotors*





<b>Indice</b>	<b>Index</b>	Pag. Page
Caratteristiche tecniche	<i>Technical features</i>	<b>F2</b>
Designazione	<i>Classification</i>	<b>F2</b>
Simbologia	<i>Symbols</i>	<b>F2</b>
Lubrificazione	<i>Lubrication</i>	<b>F2</b>
Carichi radiali	<i>Radial loads</i>	<b>F3</b>
Rapporti	<i>Ratios</i>	<b>F3</b>
PK-P32 con motore brushless	<i>PK-P32 with brushless motor</i>	<b>F4</b>
PM32LN con motore brushless	<i>PM32LN with brushless motor</i>	<b>F6</b>
PK-P42 con motore brushless	<i>PK-P42 with brushless motor</i>	<b>F8</b>
P42 con motore brushless	<i>P42 with brushless motor</i>	<b>F10</b>
PK-P52 con motore brushless	<i>PK-P52 with brushless motor</i>	<b>F12</b>

## Caratteristiche tecniche

## Technical features

Le caratteristiche principali dei motoriduttori epicicloidali brushless della serie PK-P-PM LN sono:

- Alimentazione in bassa tensione 24/36/48 Vcc
- Possibilità di montaggio encoder
- Coppie motori disponibili 37mNm a 0,7Nm
- Elettronica di comando integrata IE (opzionale)
- Lubrificazione permanente a grasso

### Soluzione PK-BB:

- Mix plastica/metallo
- Doppio cuscinetto su albero di uscita

### Soluzione P:

- Completamente in metallo
- Doppio cuscinetto su albero di uscita

### Soluzione PM LN:

- Versione bassa rumorosità della versione P

The main features of planetary gearmotors range PK-P-PM LN series are:

- Low voltage power supply 24/36/48 Vdc
- Suitable for encoder assembly
- Motor torque ratings available from 37mNm up to 0,7Nm
- Integrated speed controller IE (optional)
- Permanent grease long life lubrication

### PK-BB solution:

- Plastic/metal mix
- Double ball bearing on output shaft

### P solution:

- Completely made out of metal
- Double ball bearing on output shaft

### PM LN solution:

- Low noise version of P solution

## Designazione

## Classification

RIDUTTORE / GEARBOX					MOTORE / MOTOR		
PK	42	2	46	BB	BL012.240	24V	IE
Tipo Type	Grandezza Size	Stadi riduttore Gearbox stages	Rapporto in Ratio in	Versione Version	Tipo Type	Tensione Voltage	Opzioni Options
PK	32 42	1 2 3 4	Vedere tabelle See tables	BB	BL002.240	24V	IE Encoder  ➔ I2
P	52			-	BL005.240	36V	
PM	32			LN	BL012.240	48V	
					BL018.240		
					BL025.24E		
					BL032.240		
					BL043.240		

## Simbologia

## Symbols

Ns	n° stadi / No. stages	Pn	[W]	Potenza nominale / Nominal power
in	rapporto nominale / nominal ratio	V	[V]	Tensione / Voltage
ir	rapporto reale / real ratio	I	[A]	Assorbimento / Current
M <sub>2</sub>	[Nm] coppia in uscita in funzionamento continuativo S1 output torque for continuous operation S1	IC		Classe di isolamento termico / Thermal insulation class
Rd	rendimento dinamico / efficiency	FF		Fattore di forma / Form factor
R <sub>2</sub>	[N] massimo carico radiale al centro dell'albero uscita max. radial load at output shaft centre	Mn	[Nm]	Coppia / Torque
A <sub>2</sub>	[N] massimo carico assiale / max. axial load	n <sub>1</sub>	[Rpm]	Giri / Speed
		IP		Grado di protezione / Enclosure protection
		Kg		Peso / Weight

## Lubrificazione

## Lubrication

I riduttori epicicloidali sono lubrificati in modo permanente, non richiedono quindi ulteriore manutenzione.

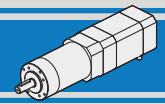
Questo gli consente di essere installati praticamente ovunque. Temperatura ambiente 0 ÷ 40 °C (in assenza di congelamento ed in assenza di condensa).

Per temperature diverse, contattare nostro UT.

Planetary gearboxes are life-time lubricated with grease, therefore they are maintenance free.

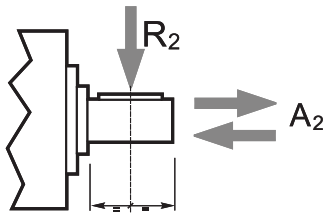
They can be installed in any location. Ambient temperature 0 ÷ 40 °C (in the absence of freezing and condensation).

For temperature outside this range please contact our technical dept.



**Carichi radiali**

**Radial loads**



Ns	Carichi Radiali R <sub>2</sub> [N] / Radial Load R <sub>2</sub> [N]						
	PK32BB	P32	PM32LN	PK42SB	P42	PK52BB	P52
1	40	40	40	15	160	200	200
2	70	70	70	30	230	320	320
3	100	100	100	45	300	450	450
4	100	130	130	45	360	500	500

Ns	Carichi Assiali A <sub>2</sub> [N] / Axial Load A <sub>2</sub> [N]						
	PK32BB	P32	PM32LN	PK42SB	P42	PK52BB	P52
1	10	10	10	5	50	60	60
2	20	20	20	10	80	100	100
3	30	30	30	30	110	150	150
4	30	40	40	30	140	200	200

**Rapporti**

**Ratios**

PK BB / P 32 42 52		
Ns	in	ir
1	4	3.7
	4	4.28
	5	5.18
	7	6.75
2	14	13.73
	16	15.88
	18	18.36
	19	19.2
	22	22.2
	25	25.01
	27	26.85
	29	28.93
	35	34.97
	46	45.56
3	51	50.89
	59	58.85
	68	68.06
	71	71.16
	79	78.71
	93	92.7
	95	95.17
	100	99.5
	107	107.2
	115	115.07
	124	123.97
	130	129.62
	139	139.13
	150	149.9
	169	168.84
	181	181.24
195	195.26	
236	236.09	
308	307.54	
4	a richiesta	on request

PM 32 LN		
Ns	in	ir
1	4	3.7
	4	4.28
	5	5.18
	7	6.75
2	14	13.73
	16	15.88
	18	18.36
	19	19.2
	22	22.2
	25	25.01
	27	26.85
	29	28.93
	35	34.97
	46	45.56
3	51	50.89
	59	58.85
	68	68.06
	71	71.16
	79	78.71
	93	92.7
	95	95.17
	100	99.5
	107	107.2
	115	115.07
	124	123.97
	130	129.62
	139	139.13
	150	149.9
	169	168.84
	181	181.24
195	195.26	
236	236.09	
308	307.54	
4	369	368.76
	721	720.98

**Rapporti preferenziali**  
**Preferred ratios**

Disponibile a 4 stadi con rapporti fino a 2076  
 Available 4 stages with ratio up to 2076



PK32BB								BL005.240				BL005.240-IE			
Ns	in	ir	M <sub>2</sub> [Nm]	Rd	R <sub>2</sub> [N]	A <sub>2</sub> [N]	Kg	Coppia nominale Rated torque 24V		Coppia massima Peak torque 24V		Coppia nominale Rated torque 24V		Coppia massima Peak torque 24V	
								[ Nm ]	[ rpm ]	[ Nm ]	[ rpm ]	[ Nm ]	[ rpm ]	[ Nm ]	[ rpm ]
1	4	<b>3.70</b>	0.6	0.75	40	10	0.12	0.14	1000	0.28	1000	0.06	811	0.12	811
	7	<b>6.75</b>						0.25	548	0.5	548	0.11	444	0.22	444
2	14	<b>13.73</b>	1.5	0.7	70	20	0.14	0.48	269	0.96	269	0.21	218	0.42	218
	25	<b>25.01</b>						0.88	148	1.76	148	0.39	120	0.77	120
	46	<b>45.56</b>						1.59	81	3.18	81	0.70	66	1.40	66
3	68	<b>68.06</b>	3	0.65	100	30	0.15	2.21	54	4.42	54	0.97	44	1.94	44
	93	<b>92.70</b>						3.01	40	6.02	40	1.32	32	2.65	32
	169	<b>168.84</b>						5.49	22	10.98	22	2.42	18	4.83	18
	308	<b>307.54</b>						10	12	20	12	4.40	10	8.80	10



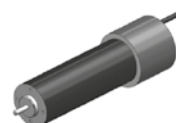
P32								BL005.240				BL005.240-IE			
Ns	in	ir	M <sub>2</sub> [Nm]	Rd	R <sub>2</sub> [N]	A <sub>2</sub> [N]	Kg	Coppia nominale Rated torque 24V		Coppia massima Peak torque 24V		Coppia nominale Rated torque 24V		Coppia massima Peak torque 24V	
								[ Nm ]	[ rpm ]	[ Nm ]	[ rpm ]	[ Nm ]	[ rpm ]	[ Nm ]	[ rpm ]
1	4	<b>3.70</b>	0.75	0.8	40	10	0.16	0.15	1000	0.29	1000	0.06	811	0.13	811
	7	<b>6.75</b>						0.26	548	0.53	548	0.12	444	0.23	444
2	14	<b>13.73</b>	2.3	0.75	70	20	0.21	0.50	269	1.01	269	0.22	218	0.44	218
	25	<b>25.01</b>						0.92	148	1.85	148	0.41	120	0.81	120
	46	<b>45.56</b>						1.67	81	3.34	81	0.73	66	1.47	66
3	68	<b>68.06</b>	4.5	0.7	100	30	0.26	2.32	54	4.64	54	1.02	44	2.04	44
	93	<b>92.70</b>						3.16	40	6.32	40	1.39	32	2.78	32
	169	<b>168.84</b>						5.76	22	11.53	22	2.54	18	5.07	18
	308	<b>307.54</b>						10.50	12	21.00	12	4.62	10	9.24	10

**Nota:** le caselle in colore grigio indicano il superamento della coppia massima sopportata dal riduttore per il servizio in S1.  
Per vedere tutti i rapporti di riduzione disponibili, vedere tabella a pag. E3

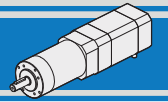
*N.B.:* boxes in grey indicate that maximum torque withstood by gear reducer for service in S1 is exceeded.  
See the table on page E3 for all available ratios.



**BL005 50 mNm  
24V**



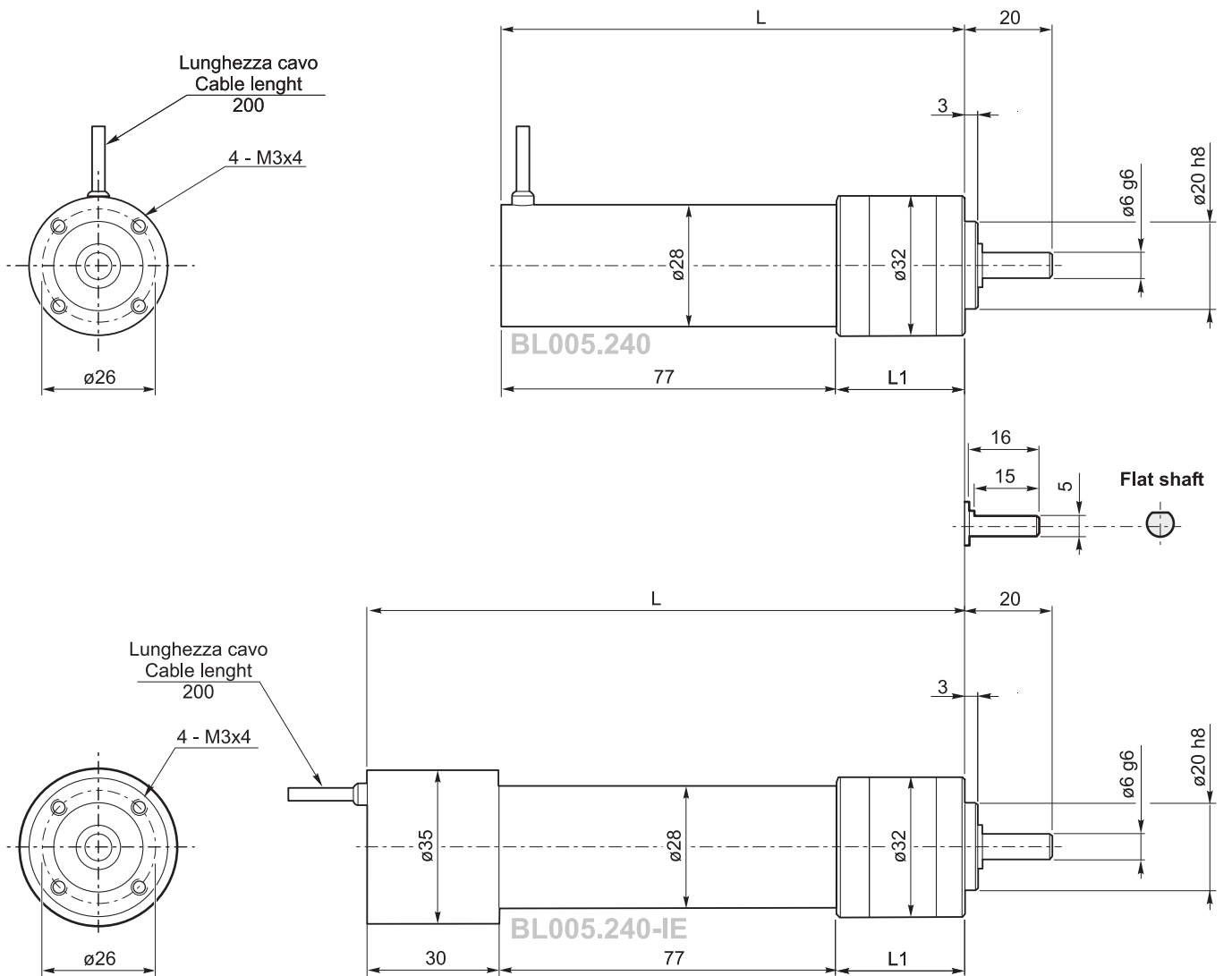
**BL005 IE 22 mNm  
24V**



**PK-P32 con motore brushless**

**PK-P32 with brushless motor**

Tipo Type	Numero di poli Number of poles	Numero di fasi Number of phase	Tensione Rated voltage [ V ]	Numero di giri Rated speed [ rpm ]	Coppia nominale Rated torque [ mNm ]	Potenza nominale Rated power [ W ]
BL005.240	4	3	24	3700	50	16
BL005.240-IE	4	3	24	3000	22	7
Tipo Type	Coppia massima Peak torque [ Nm ]	Corrente nominale Rated current [ A ]	Resistenza Resistance [ ohm ]	Induttanza Inductance [ mH ]	Corrente massima Peak current [ A ]	Peso Weight [ kg ]
BL005.240	0.1	1.0	4.67	3.5	2.0	0.208
BL005.240-IE	0.044	0.55	4.67	3.5	1.1	0.220



PK32BB P32	BL005.240		BL005.240-IE	
	Ns	L1	L	L
	1	38.5	115.5	145.5
	2	48	125	158
	3	57.5	134.5	167.5

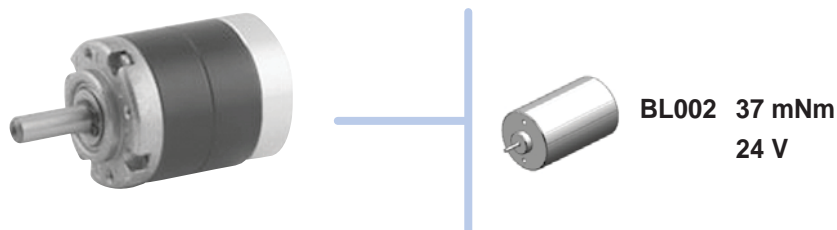
**PK-P-PM Brushless**

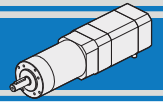


PM32LN								BL002.240 / BL002.240-IE			
Ns	in	ir	M <sub>2</sub> [Nm]	Rd	R <sub>2</sub> [N]	A <sub>2</sub> [N]	Kg	Coppia nominale - 24V Rated torque - 24V		Coppia massima - 24V Peak torque - 24V	
								[ Nm ]	[ rpm ]	[ Nm ]	[ rpm ]
1	5	<b>5.18</b>	0.75	0.8	40	10	0.16	0.15	988	0.30	988
2	19	<b>19.2</b>	2.3	0.75	70	20	0.21	0.53	267	1.06	267
	27	<b>26.85</b>						0.75	191	1.50	191
3	71	<b>71.16</b>	4.5	0.7	100	30	0.26	1.84	72	3.68	72
	139	<b>139.13</b>						3.60	37	7.20	37
4	369	<b>368.76</b>	4.5	0.65	130	40	0.31	8.87	14	17.74	14
	721	<b>720.98</b>						17.34	7	34.68	7

**Nota:** le caselle in colore grigio indicano il superamento della coppia massima sopportata dal riduttore per il servizio in S1.  
Per vedere tutti i rapporti di riduzione disponibili, vedere tabella a pag. E3

*N.B.:* boxes in grey indicate that maximum torque withstood by gear reducer for service in S1 is exceeded.  
See the table on page E3 for all available ratios.

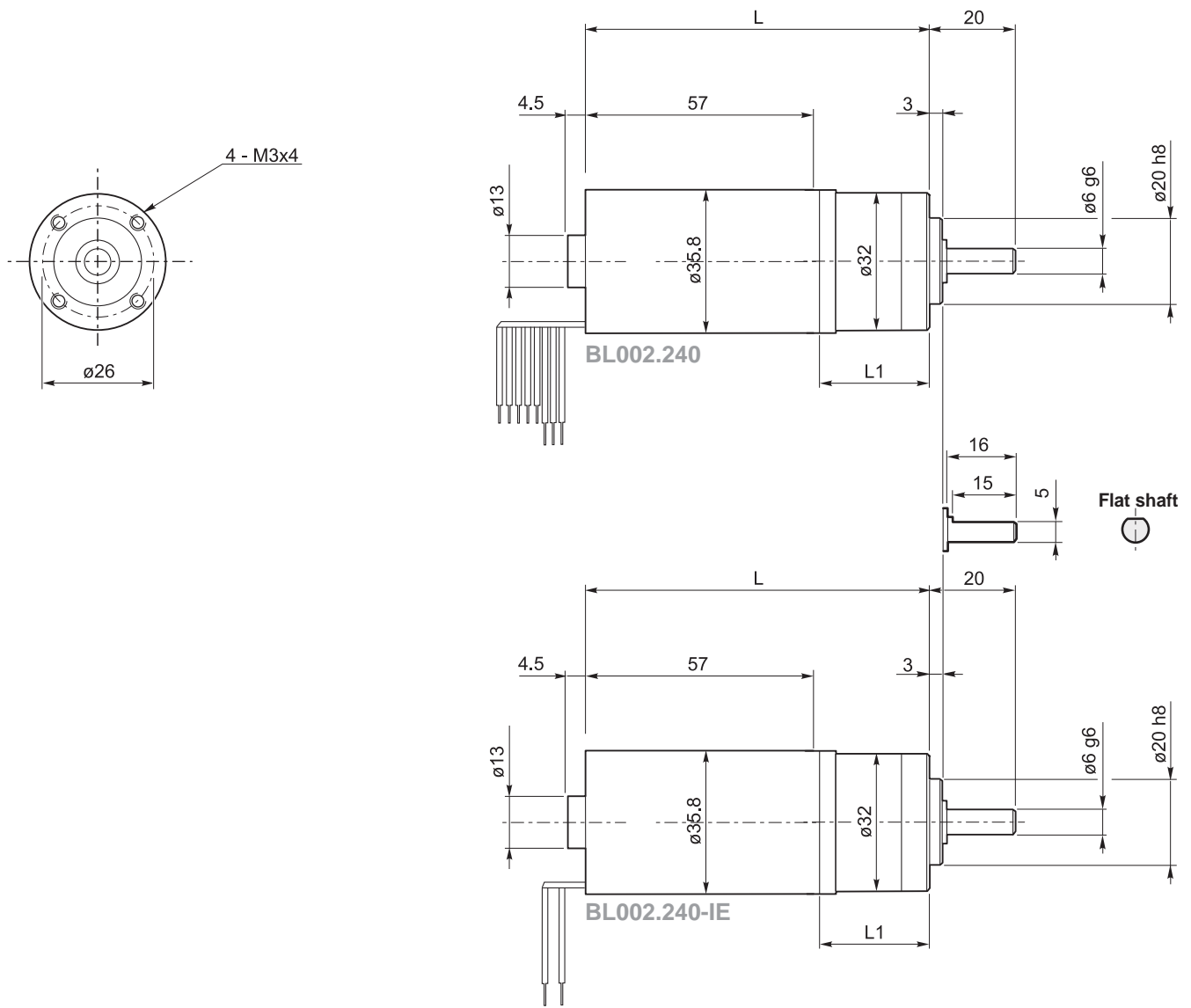




**PM32LN con motore brushless**

**PM32LN with brushless motor**

Tipo Type	Numero di fasi Number of phase	Tensione Rated voltage [ V ]	Numero di giri Rated speed [ rpm ]	Coppia nominale Rated torque [ mNm ]	Potenza nominale Rated power [ W ]
BL002.240	3	24	5120	37	19.8
BL002.240-IE	3	24	5120	37	19.8
Tipo Type	Coppia massima Peak torque [ mNm]	Corrente nominale Rated current [ A ]	Resistenza Resistance [ ohm ]	Corrente massima Peak current [ A ]	Peso Weight [ kg ]
BL002.240	74	1.1	2.8	1.9	0.25
BL002.240-IE	74	1.1	2.8	1.9	0.23



PM32LN	BL002.240	
	Ns	L1
	1	28.5
	2	38
	3	47.5
	4	57

BL002.240	
L	
	85.5
	95
	104.5
	114

**PK-P-PM Brushless**





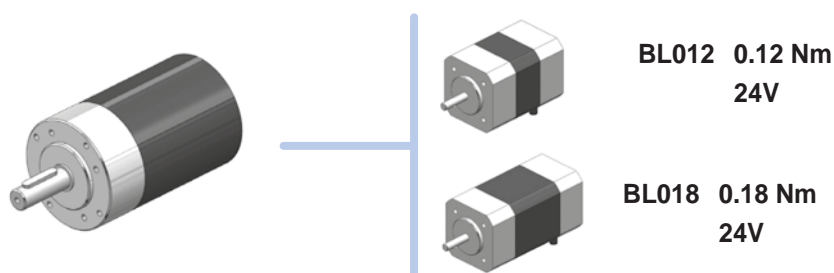
PK42BB								BL012.240				BL018.240			
								Coppia nominale Rated torque 24V		Coppia massima Peak torque 24V		Coppia nominale Rated torque 24V		Coppia massima Peak torque 24V	
Ns	in	ir	M <sub>2</sub> [Nm]	Rd	R <sub>2</sub> [N]	A <sub>2</sub> [N]	Kg	[ Nm ]	[ rpm ]	[ Nm ]	[ rpm ]	[ Nm ]	[ rpm ]		
1	4	<b>3.70</b>	2	0.80	160	50	0.4	0.37	1081	0.74	1081	0.55	1081		
	7	<b>6.75</b>						0.68	593	1.35	593	1.00	593	2.00	593
2	14	<b>13.73</b>	5	0.75	230	80	0.5	1.29	291	2.57	291	1.91	291		
	25	<b>25.01</b>						2.34	160	4.69	160	3.47	160	6.94	160
	46	<b>45.56</b>						4.27	88	8.54	88	6.32	88	12.64	88
3	68	<b>68.06</b>	10	0.70	300	110	0.6	5.96	59	11.91	59	8.81	59		
	93	<b>92.70</b>						8.11	43	16.22	43	12.00	43	24.01	43
	169	<b>168.84</b>						14.77	24	29.55	24	21.86	24	43.73	24
	308	<b>307.54</b>						26.91	13	53.82	13	39.83	13	79.65	13

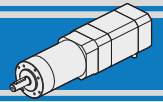


P42								BL012.240				BL018.240			
								Coppia nominale Rated torque 24V		Coppia massima Peak torque 24V		Coppia nominale Rated torque 24V		Coppia massima Peak torque 24V	
Ns	in	ir	M <sub>2</sub> [Nm]	Rd	R <sub>2</sub> [N]	A <sub>2</sub> [N]	Kg	[ Nm ]	[ rpm ]	[ Nm ]	[ rpm ]	[ Nm ]	[ rpm ]		
1	4	<b>3.70</b>	3	0.8	160	50	0.4	0.37	1081	0.74	1081	0.55	1081		
	7	<b>6.75</b>						0.68	593	1.35	593	1.00	593	2.00	593
2	14	<b>13.73</b>	7.5	0.75	230	80	0.5	1.29	291	2.57	291	1.91	291		
	25	<b>25.01</b>						2.34	160	4.69	160	3.47	160	6.94	160
	46	<b>45.56</b>						4.27	88	8.54	88	6.32	88	12.64	88
3	68	<b>68.06</b>	15	0.7	300	110	0.6	5.96	59	11.91	59	8.81	59		
	93	<b>92.70</b>						8.11	43	16.22	43	12.00	43	24.01	43
	169	<b>168.84</b>						14.77	24	29.55	24	21.86	24	43.73	24
	308	<b>307.54</b>						26.91	13	53.82	13	39.83	13	79.65	13

**Nota:** le caselle in colore grigio indicano il superamento della coppia massima sopportata dal riduttore per il servizio in S1.  
Per vedere tutti i rapporti di riduzione disponibili, vedere tabella a pag. E3

*N.B.:* boxes in grey indicate that maximum torque withstood by gear reducer for service in S1 is exceeded.  
See the table on page E3 for all available ratios.

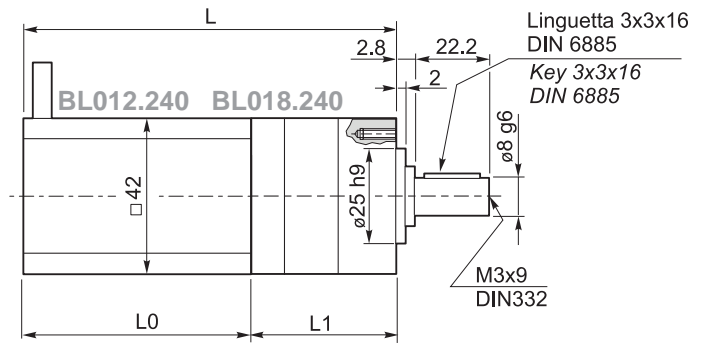
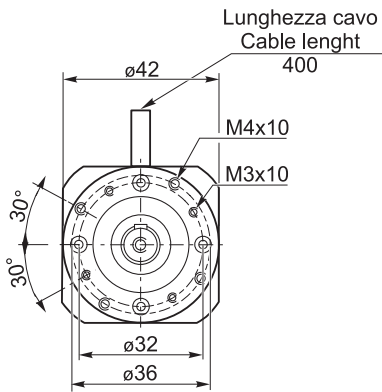




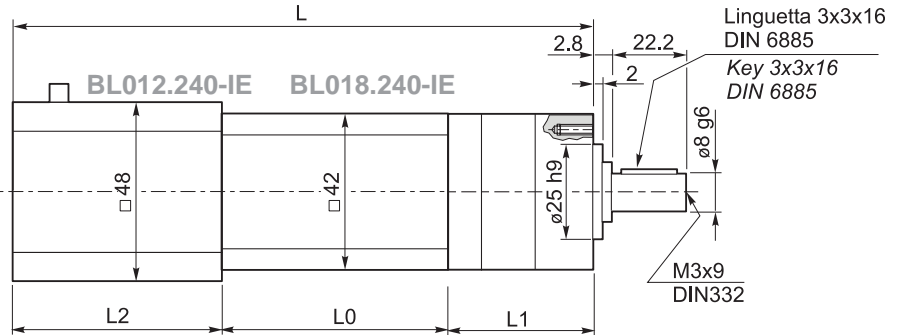
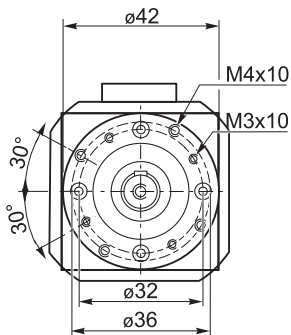
**PK-P42 con motore brushless**

**PK-P42 with brushless motor**

Tipo Type	Numero di poli Number of poles	Numero di fasi Number of phase	Tensione Rated voltage [ V ]	Numero di giri Rated speed [ rpm ]	Coppia nominale Rated torque [ Nm ]	Potenza nominale Rated power [ W ]
BL012.240	8	3	24	4000	0.125	52.5
BL018.240	8	3	24	4000	0.185	77.5
Tipo Type	Coppia massima Peak torque [ Nm ]	Corrente nominale Rated current [ A ]	Resistenza Resistance [ ohm ]	Induttanza Inductance [ mH ]	Corrente massima Peak current [ A ]	Peso Weight [ kg ]
BL012.240	0.25	3.5	0.8	1.2	7.0	0.45
BL018.240	0.37	5.0	0.55	0.8	10.0	0.65



PK42BB P42	Ns	L1	BL012.240		BL018.240	
			L0	L	L0	L
	1	67	61	128	80.30	147.5
	2	80		141		160.5
	3	93		154		173.5



PK42BB P42	Ns	L1	BL012.240-IE			BL018.240-IE		
			L0	L	L2	L0	L	L2
	1	67	61	172	44	81	204	56
	2	80		185			217	
	3	93		198			230	

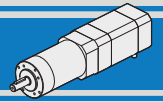
**PK-P-PM Brushless**



P42								BL025.24E			
Ns	in	ir	M <sub>2</sub> [Nm]	Rd	R <sub>2</sub> [N]	A <sub>2</sub> [N]	Kg	Coppia nominale Rated torque 24V		Coppia massima Peak torque 24V	
								[ Nm ]	[ rpm ]	[ Nm ]	[ rpm ]
1	4	3.7	3	0.8	160	50	0.4	0.74	1081	1.48	1081
	7	6.75						1.35	593	2.70	593
2	14	13.73	7.5	0.75	230	80	0.5	2.57	291	5.14	291
	25	25.01						4.70	160	9.40	160
	46	45.56						8.54	88	17.08	88
3	68	68.06	15	0.7	300	110	0.6	11.90	59	23.80	59
	93	92.7						16.20	43	32.40	43
	169	168.84						29.55	24	59.10	24
	308	307.54						53.82	13	107.64	13

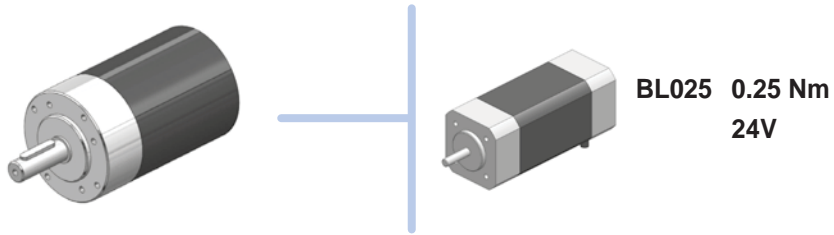
**Nota:** le caselle in colore grigio indicano il superamento della coppia massima sopportata dal riduttore per il servizio in S1.  
Per vedere tutti i rapporti di riduzione disponibili, vedere tabella a pag. E3

*N.B.:* boxes in grey indicate that maximum torque withstood by gear reducer for service in S1 is exceeded.  
See the table on page E3 for all available ratios.

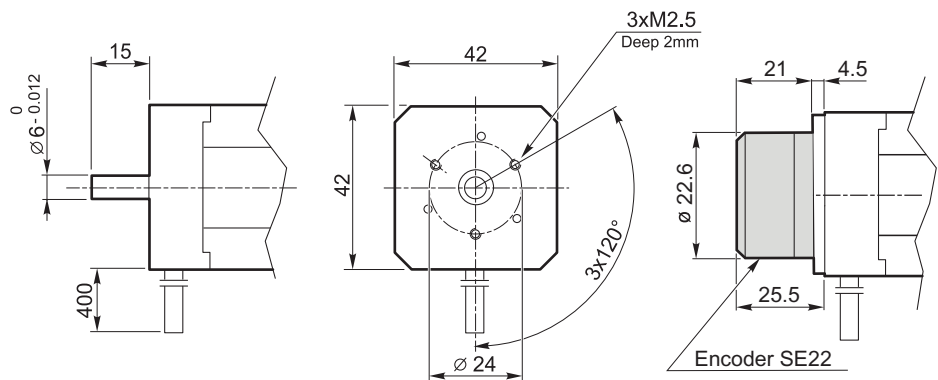
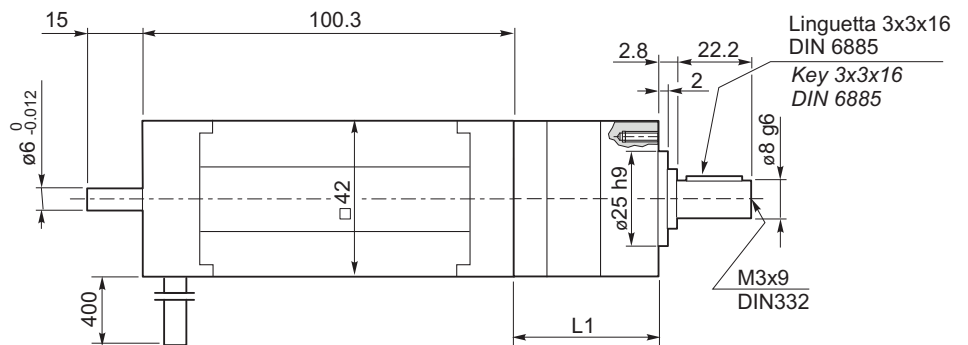
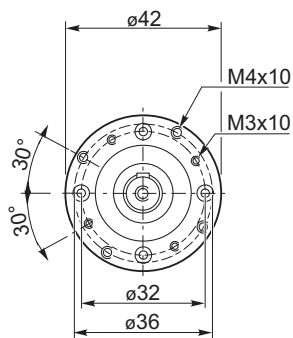


P42 con motore brushless

P42 with brushless motor



Tipo Type	Numero di poli Number of poles	Numero di fasi Number of phase	Tensione Rated voltage [ V ]	Numero di giri Rated speed [ rpm ]	Coppia nominale Rated torque [ Nm ]	Coppia massima Peak torque [ Nm ]
BL025.24E	8	3	24	4000	0.25	0.50
	Potenza nominale Rated power [ W ]	Corrente nominale Rated current [ A ]	Resistenza Resistance [ ohm ]	Induttanza Inductance [ mH ]	Corrente massima Peak current [ A ]	Peso Weight [ kg ]
	105	7	0.3	0.5	14	0.8





PK52BB								BL032.240				BL043.240			
Ns	in	ir	M <sub>2</sub> [Nm]	Rd	R <sub>2</sub> [N]	A <sub>2</sub> [N]	Kg	Coppia nominale Rated torque 24V		Coppia massima Peak torque 24V		Coppia nominale Rated torque 24V		Coppia massima Peak torque 24V	
								[ Nm ]	[ rpm ]	[ Nm ]	[ rpm ]	[ Nm ]	[ rpm ]	[ Nm ]	[ rpm ]
1	4	<b>3.70</b>	3.0	0.75	200	60	0.4	0.89	811	1.78	811	1.19	811	2.39	811
	7	<b>6.75</b>						1.62	444	3.24	444	2.18	444	4.35	444
2	14	<b>13.73</b>	8.0	0.7	320	100	0.5	3.08	218	6.15	218	4.13	218	8.27	218
	25	<b>25.01</b>						5.60	120	11.20	120	7.53	120	15.06	120
	46	<b>45.56</b>						10.21	66	20.41	66	13.71	66	27.43	66
3	68	<b>68.06</b>	17.0	0.65	450	150	0.6	14.16	44	28.31	44	19.02	44	38.05	44
	93	<b>92.70</b>						19.28	32	38.56	32	25.91	32	51.82	32
	169	<b>168.84</b>						35.12	18	70.24	18	47.19	18	94.38	18
	308	<b>307.54</b>						63.97	10	127.94	10	85.96	10	171.91	10

Nota: è possibile alimentare i motori a 36V  
Vedere dati coppia/giri a pag. D14 - D16

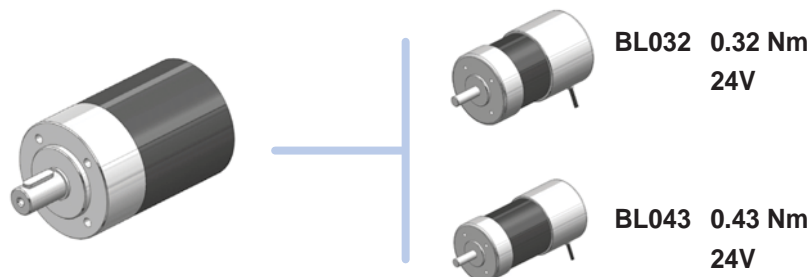
Note: Motors can be driven at 36V  
Torque/speed motor data at pag. D14 - D16

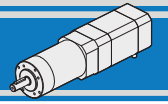


P52								BL032.240				BL043.240			
Ns	in	ir	M <sub>2</sub> [Nm]	Rd	R <sub>2</sub> [N]	A <sub>2</sub> [N]	Kg	Coppia nominale Rated torque 24V		Coppia massima Peak torque 24V		Coppia nominale Rated torque 24V		Coppia massima Peak torque 24V	
								[ Nm ]	[ rpm ]	[ Nm ]	[ rpm ]	[ Nm ]	[ rpm ]	[ Nm ]	[ rpm ]
1	4	<b>3.70</b>	4.0	0.8	200	60	0.7	0.95	811	1.90	811	1.28	811	2.55	811
	7	<b>6.75</b>						1.73	444	3.46	444	2.32	444	4.65	444
2	14	<b>13.73</b>	12.0	0.75	320	100	0.9	3.30	218	6.60	218	4.43	218	8.87	218
	25	<b>25.01</b>						6.00	120	12.00	120	8.06	120	16.13	120
	46	<b>45.56</b>						11.00	66	22.00	66	14.78	66	29.56	66
3	68	<b>68.06</b>	25.0	0.7	450	150	1.1	15.25	44	30.50	44	20.49	44	40.98	44
	93	<b>92.70</b>						20.80	32	41.60	32	27.95	32	55.90	32
	169	<b>168.84</b>						37.82	18	75.64	18	50.82	18	101.64	18
	308	<b>307.54</b>						68.9	10	137.80	10	92.58	10	185.17	10

Nota: le caselle in colore grigio indicano il superamento della coppia massima sopportata dal riduttore per il servizio in S1.  
Per vedere tutti i rapporti di riduzione disponibili, vedere tabella a pag. E3

N.B.: boxes in grey indicate that maximum torque withstood by gear reducer for service in S1 is exceeded.  
See the table on page E3 for all available ratios.

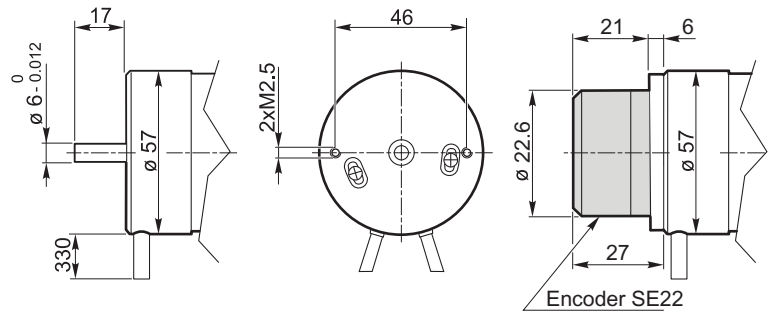
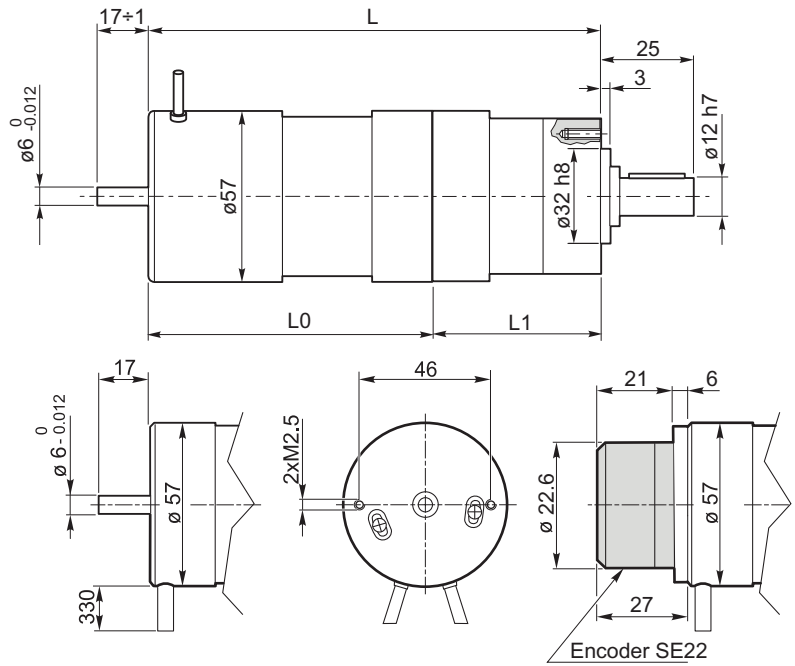
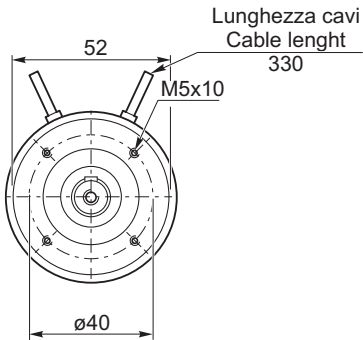




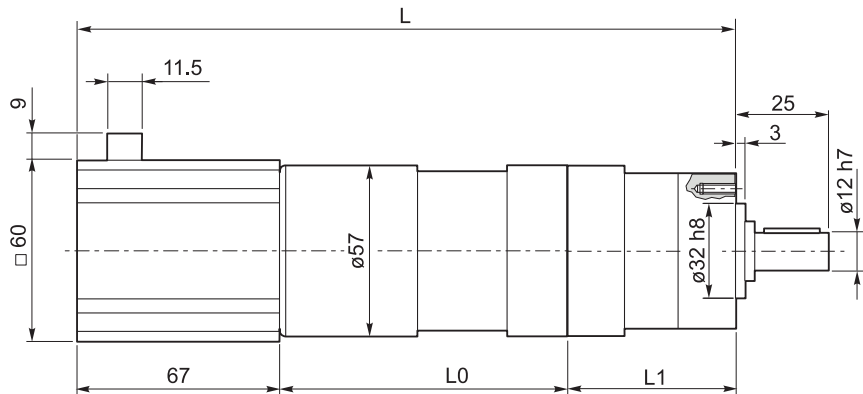
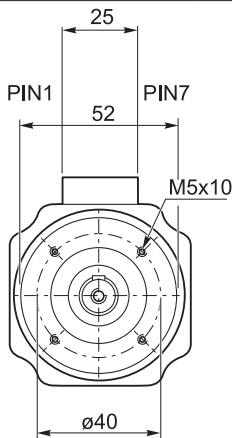
**PK-P52 con motore brushless**

**PK-P52 with brushless motor**

Tipo Type	Numero di poli Number of poles	Numero di fasi Number of phase	Tensione Rated voltage [ V ]	Numero di giri Rated speed [ rpm ]	Coppia nominale Rated torque [ Nm ]	Potenza nominale Rated power [ W ]
BL032.240	4	3	24	3000	0.32	100
BL043.240	4	3	24	3000	0.43	130
Tipo Type	Coppia massima Peak torque [ Nm ]	Corrente nominale Rated current [ A ]	Resistenza Resistance [ ohm ]	Induttanza Inductance [ mH ]	Corrente massima Peak current [ A ]	Peso Weight [ kg ]
BL032.240	0.64	5.0	0.45	1.4	10.0	1.0
BL043.240	0.86	6	0.35	1	12.0	1.25



PK52BB P52	Ns	L1	BL032.240		BL043.240	
			L0	L	L0	L
	1	78	94.5	172.5	114.5	192.5
	2	92		186.5		206.5
	3	106		200.5		220.5



PK52BB P52	Ns	L1	BL032.240-IE		BL043.240-IE	
			L0	L	L0	L
	1	78	95	240	115	260
	2	92		254		274
	3	106		268		288

**PK-P-PM Brushless**

Архангельск (8182)63-90-72  
Астана (7172)727-132  
Астрахань (8512)99-46-04  
Барнаул (3852)73-04-60  
Белгород (4722)40-23-64  
Брянск (4832)59-03-52  
Владивосток (423)249-28-31  
Волгоград (844)278-03-48  
Вологда (8172)26-41-59  
Воронеж (473)204-51-73  
Екатеринбург (343)384-55-89

Иваново (4932)77-34-06  
Ижевск (3412)26-03-58  
Казань (843)206-01-48  
Калининград (4012)72-03-81  
Калуга (4842)92-23-67  
Кемерово (3842)65-04-62  
Киров (8332)68-02-04  
Краснодар (861)203-40-90  
Красноярск (391)204-63-61  
Курск (4712)77-13-04  
Липецк (4742)52-20-81

Магнитогорск (3519)55-03-13  
Москва (495)268-04-70  
Мурманск (8152)59-64-93  
Набережные Челны (8552)20-53-41  
Нижний Новгород (831)429-08-12  
Новокузнецк (3843)20-46-81  
Новосибирск (383)227-86-73  
Омск (3812)21-46-40  
Орел (4862)44-53-42  
Оренбург (3532)37-68-04  
Пенза (8412)22-31-16

Пермь (342)205-81-47  
Ростов-на-Дону (863)308-18-15  
Рязань (4912)46-61-64  
Самара (846)206-03-16  
Санкт-Петербург (812)309-46-40  
Саратов (845)249-38-78  
Севастополь (8692)22-31-93  
Симферополь (3652)67-13-56  
Смоленск (4812)29-41-54  
Сочи (862)225-72-31  
Ставрополь (8652)20-65-13

Сургут (3462)77-98-35  
Тверь (4822)63-31-35  
Томск (3822)98-41-53  
Тула (4872)74-02-29  
Тюмень (3452)66-21-18  
Ульяновск (8422)24-23-59  
Уфа (347)229-48-12  
Хабаровск (4212)92-98-04  
Челябинск (351)202-03-61  
Череповец (8202)49-02-64  
Ярославль (4852)69-52-93

[www.inctecno.nt-rt.ru](http://www.inctecno.nt-rt.ru) || [ion@nt-rt.ru](mailto:ion@nt-rt.ru)